



Selling Yearling and Two-Year Old Bulls, and Open Commercial Heifers

STANDARD HILL CONNECTION

MARCH 11, 2022

2 pm MST NORTH OF MAIDSTONE, SK

online at **D|L|M|S**
www.dlms.ca



www.shlivestock.com

12th Annual Sale Offering:

BLACK ANGUS	1S	17
	2S	9
ANGUS x HEREFORD F1's	2S	3
POLLED HEREFORD	1S	8
	2S	9
RED ANGUS	1S	15
COMMERCIAL OPEN HEIFERS		35

96
head

SALE CONSULTANT

Castlerock Marketing



Shane Castle 306-741-7485

Mark Forsyth 306-784-7544

castlerock.mktg@sasktel.net

Presented by:

Standard Hill Livestock

Stephen & Christine Myer

Box 227 Maidstone, SK
S0M 1M0

Stephen) 306-893-8414
standard.hill@live.ca
shlivestock.com

Black Angus (Lots 1-23)
Hybrid Bulls (Lots 27-29)
Polled Herefords (Lots 30-46)



MG Angus

Michael & Jeanette Gerlinsky
Box 2765 Lloydminster, SK
S9V 0Z1

Mike) 306-821-6446
mgangus1@gmail.com
Black Angus (Lots 24-26)

Eye Hill Stock Farm

Brennan & Taryn Schachtel
Box 421 Marshall, SK
S0M 1R0

Brennan) 306-821-2504
eyehillb@gmail.com
Red Angus (Lots 47-61)

STANDARD HILL CONNECTION

MARCH 11, 2022

*Friday
2 pm MST (Alta Time)
@ Standard Hill Livestock*

Dinner @ Noon

*Sight Unseen Purchase
Program in Place*

Staff/Sale Day Phones

Ryan Hurlburt, Auctioneer	306-292-9812
Jim Pulyk, Ringman	780-787-0646
Travis Bygrove, Ringman	780-205-6008
Shane Castle	306-741-7485
Stephen Myer	306-893-8414
Michael Gerlinsky	306-821-6446
Brennan Schachtel	306-821-2504

Internet Bidding Available

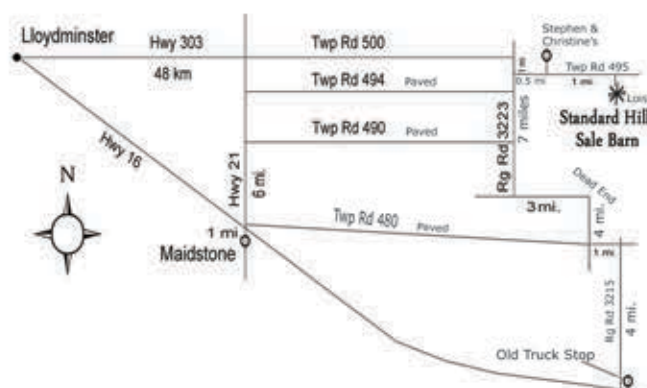
DLMS
www.dlms.ca

For more information call DLMS:
Mark Shologan 780.699.5082 or
DLMS Purebred Team 780.991.3025

VIEW CATALOGUE & VIDEOS ONLINE

shlivestock.com buyagro.com dlms.ca

Map to the Farm



**Pictures & Videos shot
January 11-16th, 2022**

Catalogue Design by Stephen Myer



We would like to welcome all our customers and friends to join us for our 12th annual sale at the farm, March 11, 2022. Along with our guests, Eye Hill Stock Farm and MG Angus, as well as open heifer consignors, we have a strong offering for you to sort through.

It was great to have more people tour the cattle prior to sale day last year and we'd be more than happy to accommodate anyone wanting to do that again this year. This allows us more time to answer your questions, get to know you, and for you to be critical of our cattle.

We strive to offer top end Polled Hereford and Black Angus cattle. We cull hard for structure, fertility, growth, and temperament. Through our use of walking bulls, which we source from across Western Canada, we maintain a management system similar to that of a commercial operation. Our cattle work for us and we expect them to work for you. We back everything up with breeder guarantees. We'd be happy to discuss our operations with you and see how our stock can meet your needs.

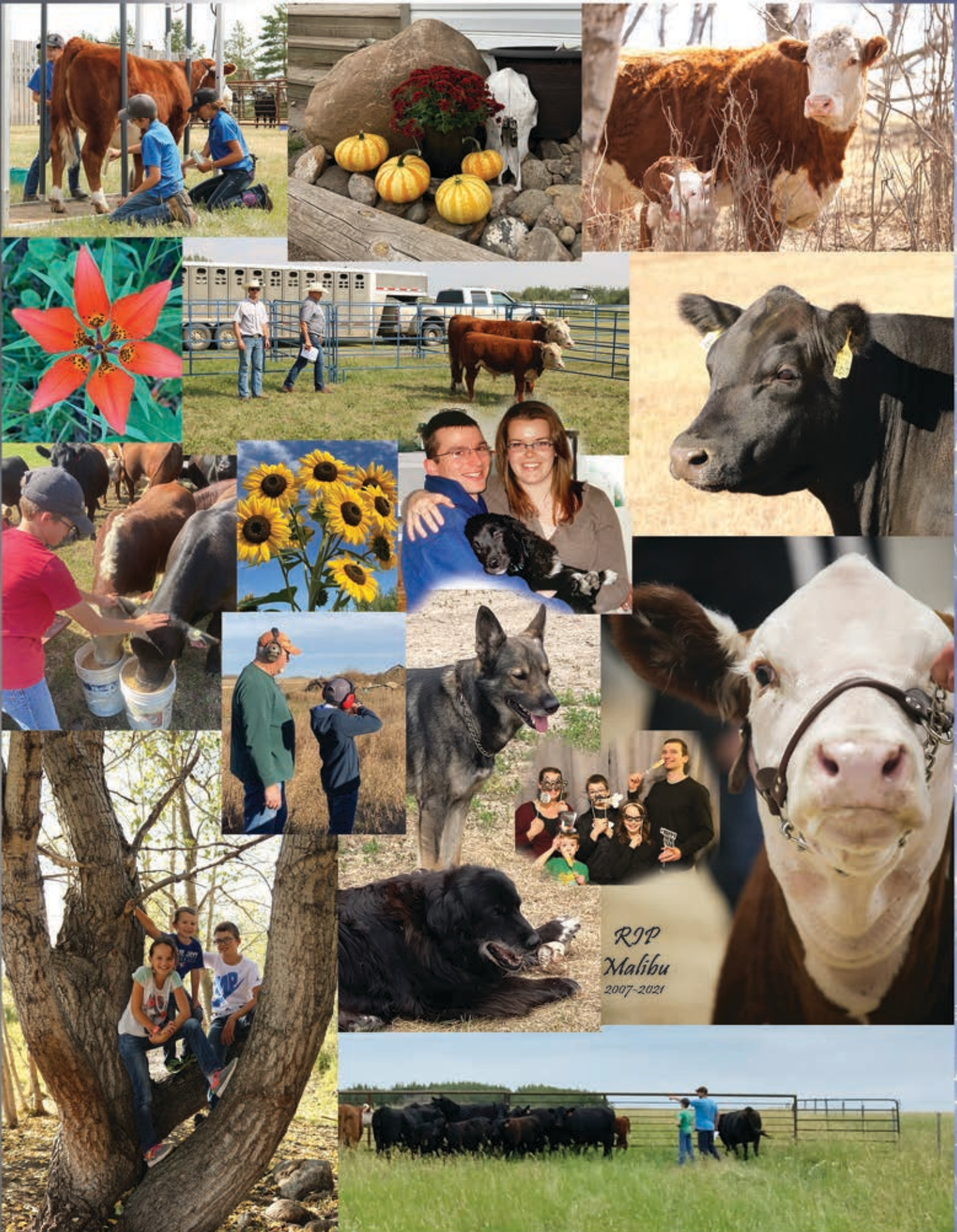
In closing, we would like to thank our past and continuing customers, all those that help us to live this wonderful lifestyle. We look forward to meeting new folks at this year's sale and beyond. If you have any questions or would like to book a farm visit please call me at 306-893-8414.



Landen, Karli, Jayce
Christine, Stephen

Stephen Myer





Standard Hill Black Angus Reference Sires

REF Bengal



SHL 479A

HF KODIAK 5R R R 9440 SCOTCH CAP 1483
 S: HF TIGER 5T D: STANDARD HILL LADY ANN 23P
 HF ECHO 84R STANDARD HILL LADY 44G
 CE 5 BW 2.5 WW 58 YW 89 SC 0.77 MCE 1.0 MILK 24
 Sire of Lots: 1, 6, 8, 11, 15 Grandsire of Lots: 3, 18
 140 Total Progeny; 11 daughters in production at Standard Hill

STANDARD HILL BENGAL 479A

A homeraised son of HF Tiger 5T, walking rights to Bengal 479A were originally sold when he was a yearling to K-Cow Ranch at Elk Point, AB, while we used him by AI. Given how his AI calves turned out, we jumped on a chance to get him walking our pastures a few years later. At the mature weight of approximately 2800 lbs Bengal was a powerhouse. He had tremendous length of spine, was muscular yet soft made, and passed a good haircoat onto his progeny. He was always very docile. After 126 progeny his epds put him in the top 15% for ce and 10% for bw of the breed. We used him effectively on heifers.



LOT 1
SON



DAM



509G
SON



DAM LOT 3
DAUGHTER

REF Major



SHL 350C

S A V PIONEER 7301 LLD 5575 TRADITION 181U
 S: GVC SETTLER 004X D: STANDARD HILL LADY ANN 117X
 G V C FRONTIER LADY 272M STANDARD HILL LADY ANN 41R
 CE -1.0 BW 0.5 WW 43 YW 78 SC 0.17 MCE 6.0 MILK 32
 Sire of Lots: 21, 22 Grandsire of Lots: 7, 9, 23
 72 Total Progeny; 12 daughters in production at Standard Hill

STANDARD HILL MAJOR 350C

Major was a standout early on and we knew right away we wanted him working at home. He developed into a moderate framed 2200 lbs tank. We have used him successfully on heifers and cows. Major's progeny exhibit strength in length of body, base width, depth of rib, fertility, muscling, and foot structure. His dam, a LLB Tradition daughter, has a level udder with small teats. After 70+ progeny he is in the top 15% of the breed for BW (average 87 on bulls & 80 on heifers), and top 1% for milk. We will have a large group of Major daughters producing for many years.



LOT 21
SON



DAM



DAUGHTER



DAUGHTER
SOLD TO
MG ANGUS

REF **Dispute**



CE -8.0 BW 2.2 WW 66 YW 92 SC 0.49 MCE -3.0 MILK 17

BELVIN DISPUTE 6125

Owned with MG Angus, Dispute impresses with his presence, length of body, depth of rib, and eye appeal. Dispute is sired by HF Junction 18B, who produced a multitude of strong sellers for Belvin, and his Ring Creek dam has been a consistent top producer. His progeny express ample muscling and growth. 6125 is in the top 10% of the breed for WW. He has 20 daughters calving for us in 2022.

CGH 125D

YOUNG DALE YOHANN 39Y

S: HF JUNCTION 18B

HF ELSIEMERE 106W

RING CREEK BARDOLINE 69W

D: BARBARA OF RING CREEK 65Y

BARBARA OF RING CREEK 31W

Sire of Lots: 18, 19 Grandsire of Lots: 1, 13



SON



DAM

REF **Flo Rider**



CE 7.0 BW 0.2 WW 40 YW 72 SC 1.74 MCE 7.0 MILK 25

DFCC 244B FLO RIDER 22F

Our pick of the 2019 Double F Bull Sale. He is a very complete bull with structural soundness, muscle shape in top and rear quarter, length and depth of body, great hair coat, angus character, a small birthweight, and lots of testicle. I admired 22F's Kodiak mother for her tightly suspended udder, small teat size, eye appeal, and moderate frame. 71 calves by him have now been recorded, many off heifers. Top 15% for BW.

DFCC 22F

CONNEALY COMPLETE 8454

S: SIX MILE COMPLETE 244B

SIX MILE QUEEN MOTHER 849U

SOO LINE KODIAK 9194

D: DFCC 9194 LIBBY 13Z

LODGE DUCHESS 42T

Sire of Lots: 7, 9, 12-14, 16-18, 23



SON



SON

REF **Home Run**



CE 2.0 BW 4.4 WW 64 YW 114 SC -- MCE 8.0 MILK 26

LKR HOME RUN 27G

Owned with MG Angus, Home Run was a member of the Frey's Champion Pen of Three at Canadian Western Agribition as a calf. Exhibiting a great amount of skeletal extension, muscle and rib he pounds down the scale. He bred well in his first year and his calves carry his performance thus far. His EPDs currently put him top 10% in the breed for Weaning Weight and Yearling Weight, and 20% for milk.

LKR 27G

MUSGRAVE FEDERATION 1302A

S: BORDER BUTTE FEDERATION 224E

SOO LINE BLACKBIRD 2048

MERIT GENESIS 1077

D: FREYBURN LADY 178B

FREYBURN LADY 2P

Sire of Lots: 2-5, 10



SON



SIRE

Standard Hill Black Angus Yearling Bulls

LOT 1



CE 3.0 BW 1.6 WW 61 YW 104 SC -- MCE 4.0 MILK 23



DAM

STANDARD HILL PREDATOR 49J

SHL 49J 2213656 Yearling Bull

HF TIGER 5T
S: STANDARD HILL BENGAL 479A
STANDARD HILL LADY ANN 23P
BELVIN DISPUTE 6125
D: STANDARD HILL ANN 388F
STANDARD HILL ANN 382C

HF KODIAK SR
HF ECHO 84R
R R 9440 SCOTCH CAP 1483
STANDARD HILL LADY 44G
HF JUNCTION 18B
BARBARA OF RING CREEK 65Y
B P F SPECIAL FOCUS 504
STANDARD HILL ANN 367A

Weights	Birth	Weaning	Yearling
	Jan 28/21	Aug 30	Jan 2
	94	775	1185
		784	1270

Predator 49J possesses many qualities you hunt for. He is at the top of his class for muscling, hip size, length and depth of body, base width, skull size, masculinity, and foot quality. He and his dam were #1 at Turtleford Summer Show, can't wait for her to hit her prime. 49J ranks in the top 15% for WW and YW EPDs. He was the lead bull in our Res Champ Pen at Edam.

LOT 2



CE 8.0 BW 1.5 WW 61 YW 108 SC -- MCE 9.0 MILK 29



DAM

STANDARD HILL HERMAN 88J

SHL 88J 2213308 Yearling Bull

BORDER BUTTE FEDERATION 224E
S: LKR HOME RUN 27G
FREYBURN LADY 178B
B P F SPECIAL FOCUS 504
D: STANDARD HILL ANN 382C
STANDARD HILL ANN 367A

MUSGRAVE FEDERATION 1302A
SOO LINE BLACKBIRD 2048
MERIT GENESIS 1077
FREYBURN LADY 2P
MYTTY IN FOCUS
B P F BLACK CLASH 341
S A V FINAL ANSWER 0035
STANDARD HILL LADY ANN 79Y

Weights	Birth	Weaning	Yearling
	Jan 21/21	Aug 30	Jan 2
	92 (twin)	760	1205
		712	1273

If you are looking to add rib shape this guy is your man. Herman, named after the Big Bambino himself, hits it out of the park. He is growthy, docile, and has a lot of testicle. His dam raised him and his twin brother to very respectable weaning weights. 88J's EPDs rank top 15% for WW, 10% for YW, and 7% for Milk in the breed. A member of our Fall Fair pen.

LOT 3



CE 5.0 BW 2.0 WW 62 YW 109 SC -- MCE 9.0 MILK 25



DAM

STANDARD HILL BICHETTE 26J

SHL 26J 2213497 Yearling Bull

BORDER BUTTE FEDERATION 224E
S: LKR HOME RUN 27G
FREYBURN LADY 178B
STANDARD HILL BENGAL 479A
D: STANDARD HILL ANN 356F
STANDARD HILL LADY ANN 12Y

MUSGRAVE FEDERATION 1302A
SOO LINE BLACKBIRD 2048
MERIT GENESIS 1077
FREYBURN LADY 2P
HF TIGER 5T
STANDARD HILL LADY ANN 23P
S A V FINAL ANSWER 0035
STANDARD HILL LADY ANN 28W

Weights	Birth	Weaning	Yearling
	Feb 05/21	Aug 30	Jan 2
	89	760	1085
		795	1173

Eye appealing Home Run son with performance. With his dam they were selected 2nd place at the Turtleford Summer Cattle Show. Member of our reserve pen of 3 at Edam Fall Fair, Number 1 indexing bull for weaning weight in the group. EPDs put him in the top 10% of the breed for WW, YW, MCE and Milk. Come look at his sweet dam as well!

LOT 4



CE 4.0 BW 2.5 WW 66 YW 112 SC -- MCE 4.0 MILK 26



DAM

STANDARD HILL GUERRERO 61J

SHL 61J 221332 Yearling Bull

BORDER BUTTE FEDERATION 224E
S: LKR HOME RUN 27G
FREYBURN LADY 178B

MUSGRAVE FEDERATION 1302A
SOO LINE BLACKBIRD 2048
MERIT GENESIS 1077
FREYBURN LADY 2P

STANDARD HILL YAHOO 68Y
D: STANDARD HILL BEBE 327A
STANDARD HILL BLACKBIRD 9W

HF TIGER 5T
STANDARD HILL LASSIE 39U
S A V FINAL ANSWER 0035
STANDARD HILL BLACKBIRD 79T

Weights	Birth	Weaning	Yearling
	Jan 09/21	Aug 30	Jan 2
	89	875	1175
		adjusted 781	adjusted 1192

This guy is all about the growth. He was top of his group for actual weaning and yearling weights, second in adjusted weaning. To acquire his pound prowess he exhibited his family's great fertility, milk, and structural traits that give him great capacity of muscle and feed conversion. A maternal sister was offered as a choice lot in the last Form and Function.

LOT 5



CE 3.0 BW 2.4 WW 55 YW 94 SC -- MCE 9.0 MILK 23



DAM

STANDARD HILL HERNANDEZ 53J

SHL 53J 2213657 Yearling Bull

BORDER BUTTE FEDERATION 224E
S: LKR HOME RUN 27G
FREYBURN LADY 178B

MUSGRAVE FEDERATION 1302A
SOO LINE BLACKBIRD 2048
MERIT GENESIS 1077
FREYBURN LADY 2P

SCC BANDO 45A
D: STANDARD HILL ANN 391F
STANDARD HILL ANN 490C

LLB 184S BANDO 502X
SCC PRIDE 31X
EARLY SUNSET FREEDOM 89U
STANDARD HILL LADY ANN 6S

Weights	Birth	Weaning	Yearling
	Feb 01/21	Aug 30	Jan 2
	89	685	1070
		adjusted 709	adjusted 1162

Wide bodied, deep ribbed, long spined, and hairy Home Run son off a squarely made, neat uddered Bando daughter. 53J has eye appeal and abundant bone. As level made and attractive he is from the side, you will also appreciate his strong top and smooth shoulder from behind. Respectable growth numbers and EPDs with a moderate birthweight as well.

LOT 6



CE 8.0 BW -0.1 WW 52 YW 90 SC -- MCE 9.0 MILK 20



DAM

STANDARD HILL FANG 18J

SHL 18J 2213463 Yearling Bull

HF TIGER 5T
S: STANDARD HILL BENGAL 479A
STANDARD HILL LADY ANN 23P

HF KODIAK 5R
HF ECHO 84R
R R 9440 SCOTCH CAP 1483
STANDARD HILL LADY ANN 44G

SCC BANDO 45A
D: STANDARD HILL ANN 339E
STANDARD HILL LADY ANN 20X

LLB 184S BANDO 502X
SCC PRIDE 31X
EARLY SUNSET FREEDOM 89U
STANDARD HILL LADY ANN 6S

Weights	Birth	Weaning	Yearling
	Jan 25/21	Aug 30	Jan 2
	82	775	1165
		adjusted 753	adjusted 1237

18J with dam won 3rd prize at the Turtleford Summer Show. A calving ease bull that has exceptional depth and length, hip capacity and muscularity. He is very docile and should end up to be larger framed like his sire. His dam has excellent skeleton and udder structure. EPDs in top 15% CE, 10% BW. Recommended for heifers. Retaining 1/4 semen interest.

LOT 7



CE 7.0 BW -0.8 WW 40 YW 67 SC -- MCE 8.0 MILK 25

STANDARD HILL COMPLETE 45J

SHL 45J 2213438 Yearling Bull

SIX MILE COMPLETE 244B
S: DFCC 244B FLO RIDER 22F
DFCC 9194 LIBBY 13Z

CONNEALY COMPLETE 8454
SIX MILE QUEEN MOTHER 849U
SOO LINE KODIAK 9194
LODGE DUCHESS 42T

STANDARD HILL MAJOR 350C
D: STANDARD HILL DAISEY 373G
STANDARD HILL DAISEY 489D

GVC SETTLER 004X
STANDARD HILL LADY ANN 117X
SCC BANDO 45A
STANDARD HILL DAISEY 74R

Weights	Birth	Weaning	Yearling
	Jan 25/21	Aug 30	Jan 2
	73	645	970
		adjusted	adjusted
		687	1030

Moderate framed, calving ease bull off a first calver. 45J is thick topped and deep ribbed, a little more compact in his make up. His EPDs rank him in the top 25% for Calving Ease and top 5% for Birth Weight. This guy should produce females with tight udder suspension, small teat size equaling longevity. Should be great for heifers.

LOT 8



CE 8.0 BW -0.1 WW 38 YW 67 SC 0.64 MCE 9.0 MILK 22

STANDARD HILL BENGLA 14J

SHL 14J 2213487 Yearling Bull

HF TIGER 5T
S: STANDARD HILL BENGLA 479A
STANDARD HILL LADY ANN 23P

HF KODIAK 5R
HF ECHO 84R
R R 9440 SCOTCH CAP 1483
STANDARD HILL LADY 44G

SCC BANDO 45A
D: STANDARD HILL ANN 336F
STANDARD HILL ANN 350D

LLB 1845 BANDO 502X
SCC PRIDE 31X
MINBURN QUANTUM 55Y
STANDARD HILL LADY ANN 117X

Weights	Birth	Weaning	Yearling
	Jan 16/21	Aug 30	Jan 2
	81	685	985
		adjusted	adjusted
		667	1019

Calving ease bull with a wide top and long spine. He ranks in the top 15% for Calving Ease and 10% for Birth Weight EPDs in the breed. He has a smooth shoulder and long neck and spine for calving ease. He carries ample muscling over his top in the prime cuts. He is the second calf off a Bando cow that goes back to Major 350C's dam. Recommended for use on heifers.

LOT 9



CE 2.0 BW 2.0 WW 42 YW 76 SC -- MCE 5.0 MILK 27

STANDARD HILL COMPLETE 70J

SHL 70J 2214442 Yearling Bull

SIX MILE COMPLETE 244B
S: DFCC 244B FLO RIDER 22F
DFCC 9194 LIBBY 13Z

CONNEALY COMPLETE 8454
SIX MILE QUEEN MOTHER 849U
SOO LINE KODIAK 9194
LODGE DUCHESS 42T

STANDARD HILL MAJOR 350C
D: STANDARD HILL ANN 382G
STANDARD HILL ANN 367A

GVC SETTLER 004X
STANDARD HILL LADY ANN 117X
S A V FINAL ANSWER 0035
STANDARD HILL LADY ANN 79Y

Weights	Birth	Weaning	Yearling
	Jan 27/21	Aug 30	Jan 2
	94	650	1035
		adjusted	adjusted
		698	1112

Very eye appealing Flo Rider son off a first calf heifer with a sensational pedigree. You'll pick 70J out of the pen shortly after you enter it as he shows himself off very well. Level in his lines, good headed and fronted, long spined and free wheeling like his daddy. He has decent thickness over his top and a squarely made hip. Flo Rider is quickly proving to be a cow maker, and this guy has one of our most prolific female lines.

LOT 10



CE 2.0 BW 3.4 WW 51 YW 94 SC -- MCE 6.0 MILK 23

STANDARD HILL HOMERUN 39J

SHL 39J 2213502 Yearling Bull

BORDER BUTTE FEDERATION 224E MUSGRAVE FEDERATION 1302A
 S: LKR HOME RUN 27G SOO LINE BLACKBIRD 2048
 FREYBURN LADY 178B MERIT GENESIS 1077
 FREYBURN LADY 2P

STANDARD HILL BENGAL 479A HF TIGER 5T
 D: STANDARD HILL ANN 367F STANDARD HILL LADY ANN 117X
 STANDARD HILL LADY ANN 79Y HF TIGER 5T
 STANDARD HILL LADY ANN 28U

Weights	Birth	Weaning		Yearling	
	Jan 07/21	Aug 30	adjusted	Jan 2	adjusted
	96	710	670	1020	1032



Eye appealing, strong topped, ample muscled Homerun son. 39J has been an attractive bull all the way through his development, narrowly missing the show pen selection. He is also wide based with a prominent crest and powerful shoulder. He carries that width down low in his rear quarter as well.

LOT 11



CE 1.0 BW 3.3 WW 50 YW 89 SC 0.68 MCE 6.0 MILK 20

STANDARD HILL HUNTSMAN 23J

SHL 23J 2213465 Yearling Bull

HF TIGER 5T HF KODIAK 5R
 S: STANDARD HILL BENGAL 479A HF ECHO 84R
 STANDARD HILL LADY ANN 23P R R 9440 SCOTCH CAP 1483
 STANDARD HILL LADY ANN 44G

SCC BANDO 45A LLB 1845 BANDO 502X
 D: STANDARD HILL QUEENY 351E SCC PRIDE 31X
 STANDARD HILL QUEEN MOTHER 2Y S A V FINAL ANSWER 0035
 STANDARD HILL QUEEN MOTHER 31W

Weights	Birth	Weaning		Yearling	
	Jan 29/21	Aug 30	adjusted	Jan 2	adjusted
	99	730	722	1075	1150



Larger framed, high capacity Bengal son off a consistent top producing Bando cow. This cross has worked so well for us. 23J is long bodied through head and neck, middle and hip. He has a smooth shoulder that blends back into a strong top and wide hip. He carries his ample thickness down into his stifle. Lots of hair on this guy too.

LOT 12



CE 4.0 BW 1.9 WW 57 YW 98 SC 1.44 MCE 6.0 MILK 25

STANDARD HILL ICE-T 41J

SHL 41J 2213468 Yearling Bull

SIX MILE COMPLETE 244B CONNEALY COMPLETE 8454
 S: DFCC 244B FLO RIDER 22F SIX MILE QUEEN MOTHER 849U
 DFCC 9194 LIBBY 13Z SOO LINE KODIAK 9194
 LODGE DUCHESS 42T

SCC BANDO 45A LLB 1845 BANDO 502X
 D: STANDARD HILL ANN 366E SCC PRIDE 31X
 STANDARD HILL ANN 333A HF TIGER 5T
 STANDARD HILL LADY ANN 60W

Weights	Birth	Weaning		Yearling	
	Feb 18/21	Aug 30	adjusted	Jan 2	adjusted
	92	690	743	1115	1275

Wide made growth bull. He has a strong top and thick butt with a larger frame size. 41J ranked well in actual and adjusted weaning weights against older calves in his group. When weaning weights were taken he had caught up considerably and took first place in adjusted yearling weight. EPDs rank him in the top 25% for both WW and YW. His extra frame comes from his large bodied, good uddered Bando dam that goes back to Highline Right Time 338.

LOT 13



CE 1.0 BW 1.9 WW 49 YW 81 SC -- MCE 4.0 MILK 23

STANDARD HILL SPARK 4J

SHL 4J 2213667 Yearling Bull

SIX MILE COMPLETE 244B
S: DFCC 244B FLO RIDER 22F
DFCC 9194 LIBBY 13Z

BELVIN DISPUTE 6125
D: STANDARD HILL ANN 304G
STANDARD HILL ANN 314C

CONNELLY COMPLETE 8454
SIX MILE QUEEN MOTHER 849U
SOO LINE KODIAK 9194
LODGE DUCHESS 42T
HF JUNCTION 188
BARBARA OF RING CREEK 65Y
EARLY SUNSET FREEDOM 89U
STANDARD HILL LADY ANN 28U

Weights	Birth	Weaning	Yearling
	Feb 05/21	Aug 30	Jan 2
	88	655	1020
		adjusted 726	adjusted 1119

Another Flo Rider son that follows the mould, eye appealing, long bodied, hairy and free wheeling. 4J is a fine effort from his first calf dam, owned by Karli. He is wide topped and carries his rear quarter muscle well down into his stifle.

LOT 14



CE 2.0 BW 2.3 WW 46 YW 86 SC -- MCE 6.0 MILK 23

STANDARD HILL SNOOPDOG 58J

SHL 58J 2214441 Yearling Bull

SIX MILE COMPLETE 244B
S: DFCC 244B FLO RIDER 22F
DFCC 9194 LIBBY 13Z

LAZY E FORTITUDE 6004D
D: STANDARD HILL ANN 380G
STANDARD HILL ANN 484B

CONNELLY COMPLETE 8454
SIX MILE QUEEN MOTHER 849U
SOO LINE KODIAK 9194
LODGE DUCHESS 42T
PA FORTITUDE 2500
LAZY E BLACKBIRD 694B
GVC SETTLER 004X
STANDARD HILL LADY ANN 24R

Weights	Birth	Weaning	Yearling
	Jan 25/21	Aug 30	Jan 2
	88	650	1030
		adjusted 693	adjusted 1100

Attractive made Flo Rider with a smooth and clean front end, decent top and a square hip. Patterns very well with his paternal brothers, they'll be great female makers. Once again off a first calver that did a great job.

LOT 15



CE 9.0 BW -1.0 WW 33 YW 67 SC 0.31 MCE 9.0 MILK 23

STANDARD HILL BENGAL 91J

SHL 91J 2213440 Yearling Bull

HF TIGER 5T
S: STANDARD HILL BENGAL 479A
STANDARD HILL LADY ANN 23P

EARLY SUNSET FREEDOM 89U
D: STANDARD HILL ANN 490C
STANDARD HILL LADY ANN 65

HF KODIAK SR
HF ECHO 84R
R R 9440 SCOTCH CAP 1483
STANDARD HILL LADY ANN 44G
PSF FREEDOM 12S
ROSE HILL MISS DAWN 31Z
K G POWER DESIGN
STANDARD HILL LADY ANN 23P

Weights	Birth	Weaning	Yearling
	Jan 30/21	Aug 30	Jan 2
	84	690	995
		adjusted 670	adjusted 1063

Long bodied, smooth made calving ease bull off a consistent producing Freedom 89U cow. 91J has decent width of rear and top that blends well into his extended, clean front end. He ranks in the top 10% for Calving Ease and 4% for Birth Weight for EPDs in the breed. I would recommend him for use on heifers.

Standard Hill Black Angus Two-Year-Olds

LOT 16



CE 2.0 BW 1.3 WW 46 YW 70 SC 1.44 MCE 4.0 MILK 29



55Y

STANDARD HILL COMPLETE 10H

SHL 10H 2155822 Two year-old Bull

SIX MILE COMPLETE 244B CONNEALY COMPLETE 8454
S: DFCC 244B FLO RIDER 22F SIX MILE QUEEN MOTHER 849U
DFCC 9194 LIBBY 13Z LODGE DUCHESS 42T
MINBURN QUANTUM 55Y TK QUANTUM PHYSICAL 61P
D: STANDARD HILL ANN 305D MINBURN MAY 198T
STANDARD HILL LADY ANN 33T SCA 3299 OF IDEAL 1418
STANDARD HILL LADY ANN 21G

Weights	Birth	Weaning	Yearling
Dec 23/21	Apr 17/20	Oct 14	Mar 15
1605	89	675	995
		adjusted 756	adjusted 1046

Big boy here. 10H was number 1 in the group for weaning and yearling performance. He is larger framed, long and deep bodied, wide topped and square hipped. He has a good foot and moves like a cat. His Quantum 55Y dam has a great udder and has been producing top end calves consistently.

LOT 17



CE 2.0 BW 2.4 WW 48 YW 81 SC 1.73 MCE 5.0 MILK 20

STANDARD HILL COMPLETE 20H

SHL 20H 2155823 Two year-old Bull

SIX MILE COMPLETE 244B CONNEALY COMPLETE 8454
S: DFCC 244B FLO RIDER 22F SIX MILE QUEEN MOTHER 849U
DFCC 9194 LIBBY 13Z LODGE DUCHESS 42T
SCC BANDO 45A LLB 1845 BANDO 502X
D: STANDARD HILL ROXY 327D SCC PRIDE 31X
STANDARD HILL BLACKBIRD 9W S A V FINAL ANSWER 0035
STANDARD HILL BLACKBIRD 79T

Weights	Birth	Weaning	Yearling
Dec 23/21	Apr 18/20	Oct 14	Mar 15
1510	94	615	920
		adjusted 691	adjusted 970

This Flo Rider son exhibits the great length, structural soundness and growth of his paternal group. Consistency in a calf crop is a sought after quality. 20H is wide topped and smoother shouldered with a decent rump on him. He has a strong libido and can definitely cover some cows and ground during the breeding season.

LOT 18



CE 4.0 BW 1.6 WW 40 YW 74 SC 1.65 MCE 5.0 MILK 23

STANDARD HILL COMPLETE 9H

SHL 9H 2155844 Two year-old Bull

SIX MILE COMPLETE 244B CONNEALY COMPLETE 8454
S: DFCC 244B FLO RIDER 22F SIX MILE QUEEN MOTHER 849U
DFCC 9194 LIBBY 13Z LODGE DUCHESS 42T
STANDARD HILL BENGAL 479A HF TIGER 5T
D: STANDARD HILL LASS 316F STANDARD HILL LADY ANN 23P
STANDARD HILL LASSIE 39U SCA 3299 OF IDEAL 1418
STANDARD HILL LASSIE 29P

Weights	Birth	Weaning	Yearling
Dec 23/21	Apr 07/20	Oct 14	Mar 15
1490	82	550	895
		adjusted 587	adjusted 927

Calving ease bull with decent muscling and structural soundness. I'd be happy to tour you through this tight group of Flo Rider progeny come sale day, you'll like their type. 9H is a heifer's first calf, and is recommended for heifers.



479A

LOT 19



CE 3.0 BW 0.7 WW 55 YW 89 SC 0.87 MCE 5.0 MILK 19



0035

STANDARD HILL DISPUTE 55H

SHL 55H 2149205 Two year-old Bull

HF JUNCTION 18B YOUNG DALE YOHANN 39Y
 S: BELVIN DISPUTE 6125 HF ELSIEMERE 106W
 BARBARA OF RING CREEK 65Y RING CREEK BARDOLINE 69W
 BARBARA OF RING CREEK 31W
 S A V FINAL ANSWER 0035 SITZ TRAVELER 8180
 D: STANDARD HILL LADY ANN 8Y S A V EMULOUS 8145
 STANDARD HILL LADY ANN 60W HYLINE RIGHT TIME 338
 STANDARD HILL LADY ANN 14M

Weights	Birth	Weaning	Yearling
Dec 23/21	Apr 11/20	Oct 14/20	Mar 15
1490	79	615 670	950 990

Calving ease bull with growth. His Maternal Grandsire is breed legend, S A V Final Answer 0035, known for being the ultimate curve bender. 55H is smooth fronted and well extended skeletally, but still possesses a decent top and rear quarter. He was top 3 at weaning and yearling in this group of bulls. Approved for use on heifers.

LOT 20



CE -4.0 BW 2.7 WW 55 YW 88 SC 1.11 MCE 3.0 MILK 21

MAT.
SIB

STANDARD HILL DISPUTE 56H

SHL 56H 2149206 Two year-old Bull

HF JUNCTION 18B YOUNG DALE YOHANN 39Y
 S: BELVIN DISPUTE 6125 HF ELSIEMERE 106W
 BARBARA OF RING CREEK 65Y RING CREEK BARDOLINE 69W
 BARBARA OF RING CREEK 31W
 S A V FINAL ANSWER 0035 SITZ TRAVELER 8180
 D: STANDARD HILL LADY ANN 12Y S A V EMULOUS 8145
 STANDARD HILL LADY ANN 28W K G POWER DESIGN
 STANDARD HILL LADY ANN 29S

Weights	Birth	Weaning	Yearling
Dec 23/21	Apr 11/20	Oct 14/20	Mar 15
1530	97	640 700	950 987

Eye appealing Dispute son off a high volume Final Answer daughter. This guy came out a little bigger, but his numbers, phenotype and pedigree say calving ease. 56H was number two in the group for weaning and yearling weights.

LOT 21



CE 4.0 BW -0.3 WW 43 YW 73 SC -- MCE 5.0 MILK 26



367A

STANDARD HILL SHADOW 52H

SHL 52H 2149288 Two year-old Bull

GVC SETTLER 004X S A V PIONEER 7301
 S: STANDARD HILL MAJOR 350C GVC FRONTIER LADY 272M
 STANDARD HILL LADY ANN 117X LLB 557S TRADITION 181U
 STANDARD HILL LADY ANN 41R
 WILBAR TRADE SECRET 644B DMM TRADE SECRET 36X
 D: STANDARD HILL ANN 382E WILBAR MAYFLOWER 412Y
 STANDARD HILL ANN 367A S A V FINAL ANSWER 0035
 STANDARD HILL LADY ANN 79Y

Weights	Birth	Weaning	Yearling
Dec 23/21	May 02/20	Oct 14/20	Mar 15
1430	79	545 658	850 928

Stout made, moderate framed calving ease bull. 52H is one of two Major 350C sons to sell this year. He has superior depth and width of rib, muscle and chest. His moderate frame coupled with his BW numbers make him an option for heifers.

LOT 22



CE 2.0 BW 0.3 WW 38 YW 68 SC 0.14 MCE 3.0 MILK 26

STANDARD HILL MAJOR 62H

SHL 62H 2149291 Two year-old Bull

GVC SETTLER 004X S A V PIONEER 7301
 S: STANDARD HILL MAJOR 350C G VC FRONTIER LADY 272M
 STANDARD HILL LADY ANN 117X LLB 5575 TRADITION 181U
 STANDARD HILL LADY ANN 41R

STANDARDHILL COLONIST 375C GVC SETTLER 004X
 D: STANDARD HILL QUEENY 395E STANDARD HILL LADY ANN 111Y
 STANDARD HILL QUEENY 503C B P F SPECIAL FOCUS
 STANDARD HILL QUEENY 21U

Weights	Birth	Weaning	Yearling
Dec 23/21	Apr 20/20	Oct 14/20	Mar 15
1470	82	560 636	865 919



503C

Another Major son that follows his sire's mould; thick, moderate, and attractive made. 62H has a moderate birthweight and is top 15% in the breed for Birth Weight. Our Queen cow line has superior length of spine and sweet udders.

LOT 23



CE 2.0 BW 1.5 WW 44 YW 80 SC 1.20 MCE 5.0 MILK 24

STANDARD HILL COMPLETE 68H

SHL 68H 2155859 Two year-old Bull

SIX MILE COMPLETE 244B CONNEALY COMPLETE 8454
 S: DFCC 244B FLO RIDER 22F SIX MILE QUEEN MOTHER 849U
 DFCC 9194 LIBBY 13Z SOO LINE KODIAK 9194
 LODGE DUCHESS 42T

STANDARD HILL MAJOR 350C GVC SETTLER 004X
 D: STANDARD HILL ROXY 397F STANDARD HILL LADY ANN 117X
 STANDARD HILL ROXY 845C SCC BANDO 45A
 STANDARD HILL BLACKBIRD 6Y

Weights	Birth	Weaning	Yearling
Dec 23/21	Apr 28/20	Oct 14/20	Mar 15
1500	84	520 613	865 944

Calving ease bull off a first calf heifer. 68H is attractive made and free moving like his other Flo Rider 22F brothers. He is smooth shouldered, strong topped, with decent muscle in his rear quarter. I would not shy from using this fellow on heifers.

Bear Creek Stoney 32F



FUTURE SIRE

CBW 32F

HF PROWLER 43U SSA 4336 DENSITY 26T
 S: MERIT STONEY CREEK 4023 D: BEAR CREEK LASS 32Y
 MERIT PRIDE 2010 YOUNG DALE LASS 49R

First offering of yearling and two-year old bulls by Stoney in 2023

CE 0.0 BW 3.1 WW 43 YW 73 SC 0.95 MCE 7.0 MILK 21

Duralta 8020 Inferno 42H



FUTURE SIRE

DFLC 42H

BAR S RANGE BOSS 4002 DURALTA SPRING FEVER 9C
 S: MERIT MCLAREN 8020F D: DURALTA 9C EMULATION 32F
 MERIT BLACKCLASS 1184 DURALTA 565 EMULATION 50U

First offering of yearling bulls by Inferno in 2023

CE 8.0 BW -0.1 WW 39 YW 68 SC -- MCE 11.0 MILK 25

The Advantages of Angus



*Mothering & Maternal

Ever calved Angus cows? They protect their babies and keep them close while producing superior milk. You can use the strength of an angus cow with a terminal bull for big returns

*Calving Ease

Short Gestation, lower birthweight, angular design all mean less work and more live calves

*Vigour and Growth

Angus calves pop up and start sucking soon after birth and they stay healthy yielding strong weight gains meaning more dollars

*Carcass Quality

No other breed can match the marbling of Angus beef on the rail and no other can match the effort for improving carcass traits

Standard Hill Angus Show Awards 2021

We were pleased to be out on the road again with some cattle this year!

At the Turtleford Summer Cattle Show in August we placed 1, 2, and 3 in the Mature British Cow with Bull Calf at side division with Lots 1, 3, and 6 with their mothers.



1st Place- Ann 388F- Dam of Lot 1

2nd Place- Ann 356F- Dam of Lot 3

3rd Place- Ann 339E- Dam of Lot 6

We returned to the Edam Fall Fair with a pen of Black Angus Bulls and were awarded Reserve Champion Pen of 3 British Bulls with sale bulls:



Lot 1



Lot 2



Lot 3



Lot 6

Thank You to the committees that organized these shows and all that attended!



Welcome to the 2022 Standard Hill Connection Sale. We want to thank Stephen & Brennan and families for inviting us to join them at their annual sale. It is a fun and rewarding week working with these two families and friends.

2021 was a challenge for all sectors of agriculture with the drought conditions making feed supplies tight and forcing grain prices to increase to make up the shortage in production. On a positive note, it was great to see the cows & calves do well on limited grass resources while still showing off their growth potential and milking ability.

I believe the 2 yearling bulls we have on offer this year are impressive individuals for their growth and phenotype. The 2 year old is a calving ease specialist. The Home Run 27G bulls are looking really good with excellent growth and muscle, and we look forward to seeing how the DFLC Inferno 42H calves develop in the upcoming months.

We want to thank the buyers from last year's sale for your trust in our program. If you are interested or have any questions about the sale offering please don't hesitate to call me, Stephen or Brennan. The cattle are available for viewing any time before the sale and we hope to see many of you on March 11 at the Myer farm.



Michael, Jeanette, Rylen, Nevan

Michael Gerlinsky

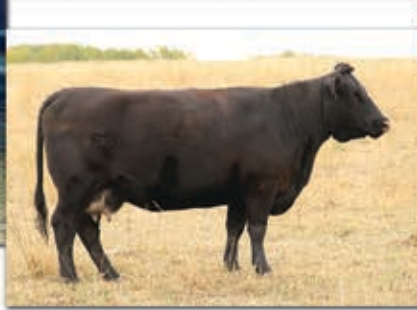


MG Angus Reference Sires/Yearling Sale Bull



Duralta 8020 Inferno 42H

*calves arriving 2022



Standard Hill Raven 301E-dam of Lot 25

LKR Home Run 27G

REF



LKR 27G

MUSGRAVE FEDERATION 1302A
S: BORDER BUTTE FEDERATION 224E
SOO LINE BLACKBIRD 2048
MERIT GENESIS 1077
D: FREYBURN LADY 178B
FREYBURN LADY 2P

Sire of Lots: 24, 25

CE 2.0 BW 4.4 WW 64 YW 114 SC -- MCE 8.0 MILK 26

Belvin Dispute 6125

REF



CGH 125D

YOUNG DALE YOHANN 39Y
S: HF JUNCTION 18B
HF ELSIEMERE 106W
RING CREEK BARDOLINE 69W
D: BARBARA OF RING CREEK 65Y
BARBARA OF RING CREEK 31W

Sire of Lot: 26

CE -8.0 BW 2.2 WW 66 YW 92 SC 0.49 MCE -3.0 MILK 17

LOT 24



CE 2.0 BW 3.2 WW 48 YW 90 SC -- MCE 6.0 MILK 16



DAM

MGA HOME RUN 215J

MGA 215J 2217563 Yearling Bull

BORDER BUTTE FEDERATION 224E
S: LKR HOME RUN 27G
FREYBURN LADY 178B
MUSGRAVE FEDERATION 1302A
SOO LINE BLACKBIRD 2048
MERIT GENESIS 1077
FREYBURN LADY 2P
S A V REGISTRY 2831
D: MGA BLACK VELVET 8D
MGA BLACK VELVET 1P
RITO 707 OF IDEAL 3407 7075
S A V MADAME PRIDE 0075
VERMILION DATELINE 7078
LAZY J BLACK VELVET 4C

Weights	Birth	Weaning	Yearling
	Jan 27/21	Aug 30	Jan 2
	94	665	1055
		adjusted 634	adjusted 1133

215J is a very stout and impressive individual sired by LKR Home Run 27G. He is long bodied with a wide top and expressive muscle pattern in his rump all packaged in a moderate frame with excellent hair. His dam is a SAV Registry daughter that has excellent structure with an almost perfect udder and teat placement. 215J will be hard to miss on sale day if you are looking for a bull that will add pounds and hair to his calf crop.

LOT 25



CE 12.0 BW -1.8 WW 40 YW 67 SC -- MCE 12.0 MILK 28

MAT.
SIB

MGA HOME RUN 219J

MGA 219J 2217567 Yearling Bull

BORDER BUTTE FEDERATION 224E MUSGRAVE FEDERATION 1302A
 S: LKR HOME RUN 27G SOO LINE BLACKBIRD 2048
 FREYBURN LADY 178B MERIT GENESIS 1077
 FREYBURN LADY 2P

STANDARD HILL BENGAL 308C STANDARD HILL BENGAL 479A
 D: STANDARD HILL RAVEN 301E STANDARD HILL BLACKBIRD 54T
 STANDARD HILL RAVEN 310C EARLY SUNSET FREEDOM 89U
 STANDARD HILL BLACKBIRD 10U

Weights	Birth	Weaning	Yearling
	Feb 11/21	Aug 30	Jan 2
	71	665	1030
		adjusted 711	adjusted 1142

219J is another impressive Home Run 27G son out of Standard Hill Raven 301E. He is almost a carbon copy to his maternal brother that sold to Don G. Hamilton last year. 219J has a low birth weight with excellent growth, hair and lots of muscle expression that would work well on heifers and cows.

LOT 26



CE 0.0 BW 1.3 WW 53 YW 85 SC 0.61 MCE 4.0 MILK 20

FULL
SIB

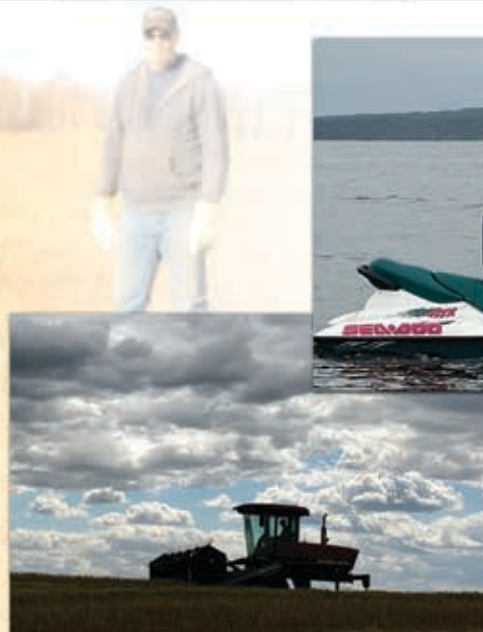
MGA DISPUTE 211H

MGA 211H 2171166 Two year-old Bull

HF JUNCTION 18B YOUNG DALE YOHANN 39Y
 S: BELVIN DISPUTE 6125 HF ELSIEMERE 106W
 BARBARA OF RING CREEK 65Y RING CREEK BARDOLINE 69W
 BARBARA OF RING CREEK 31W
 RED STOREBO T N T 56X RED BROX T N T 3T
 D: MGA JESTRESS 40B RED 30 SOAPY 58S
 JUSTAMERE 1036 JESTRESS 713W EXAR KING 1036
 MGA JESTRESS 23N

Weights	Birth	Weaning	Yearling
	Feb 17/20	Oct 14/20	
	83	775	1115
		adjusted 674	adjusted 1034

211H is a calving ease 2 year old with excellent growth and structure. He is the last Belvin Dispute 125D son we will have to sell. His mother has an excellent udder and great disposition. A full brother sold to Duriez Ranching in last year's sale.



Standard Hill Livestock F1 Two Year Olds

These bulls are a product of our cross-breeding program showcasing what our breeds can do together.
We consider this a maternal powerhouse cross that yields cattle with ultimate fertility and longevity.



LOT **27**



SHL STONE COLD 316H

POLLED HEREFORD x BLACK ANGUS

ANL SI 425X UNTAPPED 182W 94B SCA 3299 OF IDEAL 1418
S: STANDARD-HILL UNTAPPED 59D D: STANDARD HILL LASSIE 39U
SHPH 20X FAITH 51Z STANDARD HILL LASSIE 29P

Weights	Birth	Weaning	Yearling
Dec 23/21	Apr 26/20	Oct 14/20	Mar 15
1530	91	565 659	800 851



SIRE



LOT **28**



SHL FOX 326H

POLLED HEREFORD x BLACK ANGUS

ANL SI 425X UNTAPPED 182W 94B SCA 3299 OF IDEAL 1418
S: STANDARD-HILL UNTAPPED 59D D: STANDARD HILL LASS 316A
SHPH 20X FAITH 51Z STANDARD HILL LASSIE 39U

Weights	Birth	Weaning	Yearling
Dec 23/21	Apr 26/20	Oct 14/20	Mar 15
1380	94	750 809	860 872



SIRE



DAM

LOT **29**



SHL OREO 434H

BLACK ANGUS x POLLED HEREFORD

HF TIGER 5T SQUARE-D PAT 2N 7S
S: STANDARD HILL BENGAL 479A D: STANDARD-HILL PANSIE 58B
STANDARD HILL LADY ANN 23P SHPH 50T LAUREN 60W

Weights	Birth	Weaning	Yearling
Dec 23/21	Apr 27/20	Oct 14/20	Mar 15
1410	85	620 730	935 1004



SIRE



DAM

Polled Hereford Reference Sires

REF Maverick



CE 3.9 BW 1.0 WW 37.5 YW 71.6 SC 1.3 MCE 0.1 MILK 27.5

MCCOY 8Y MAVERICK 25E

Maverick 25E was the leadoff bull in the McCoy/Beck Bull Sale in 2018. He is a heterozygous polled son of NJW 73S W18 Homegrown 8Y ET, who is an epd trait leader for calving ease, milk, and ribeye area among others. He is free of Mandibulofacial Dysostosis. Maverick has a moderate frame score, wide top, great hip and loads of muscle. His first daughters are showing great udder conformation.

ZTM 25E

SHF WONDER M326 W18
S: NJW 73S W18 HOMEGROWN 8Y ET
NJW P606 72N DAYDREAM 73S

JDH 117R EQUITY 70Y ET
D: MCCOY 70Y CONNIE 87A
MCCOY 30N CONNIE 3W

Sire of Lots: 42-44

Grandsire of Lot: 32



LOT 44
SON



DAUGHTER
DAM OF
LOT 32



REF Standard-Hill Matrix 49E



SHL 49E

NCX WINCHESTER 745W
S: BARE MR YOU TUBE 4Y
NCX MISS WHIPLASH 3W

GHC-CT-GUARDIAN 40X
D: SHPH 40X CHELAN 46Z
SHPH 15U CHELAN 33X

Sire of Lots: 45, 46

CE -0.9 BW 3.7 WW 50.5 YW 82.4 SC 0.6 MCE 6.9 MILK 23.4

REF Magnet



CE 11.2 BW 0.1 WW 38.2 YW 65.7 SC 1.1 MCE 4.4 MILK 23.3

MCCOY 53A MAGNET 109E

Magnet 109E was purchased from the McCoy/Beck Bull Sale in 2018. He is a homozygous polled son of their Skyfall 53A herdsire. His dam is a flush cow at MCC and they have also retained a son of hers, McCoy 719T Matrix ET 30E, for their own use. Magnet has been used on our heifers and cows, yielding eye appealing, long bodied, strong topped progeny with generally a lot of pigment.

ZTM 109E

JDH 117R EQUITY 70Y ET
S: MCCOY 70Y SKYFALL 53A
MCCOY 25M ALISON 64W

SHF PROGRESS P20
D: MCCOY P20 ZENA 1B
MCCOY 23U ZENA 142Z

Sire of Lots: 34-41



LOT 34
SON



LOT 39
SON

REF Ace

CE 14.4 BW -2.0 WW 37.2 YW 57.9 SC 0.9 MCE 9.7 MILK 11.1

ACE

STANDARD-HILL ACE 96F

We are excited to offer our first group of Ace calves this year. He was a standout spring born calf in 2018 on the side of his very attractive Pat 7S dam. Ace is long bodied and level in his lines, wide in heart girth, bold ribbed, full in the stifle, smooth in his transitions, nice skulled, and heavily pigmented. He is better than top 5% in the breed for Calving Ease and Birth Weight EPDs. His first calf crop highlights our yearling sale bulls and our replacement heifer pen.

SHL 96F

CHSF 52U BRIAN 5Y
S: CHSF 5Y DEALER 13D
CHSF 7W ROSE 22A

SQUARE-D PAT 2N 7S
D: SHPH 7S GLITTER 24Y
MHFM MISS NED 806H 627S

Sire of Lots: 30-33



DAM

LOT 30

CE 7.7 BW 0.9 WW 41.6 YW 65.4 SC 0.9 MCE 7.1 MILK 14.7

**STANDARD-HILL HOTSHOT 100J****SHL 100J C03082968 Yearling Bull**

CHSF 5Y DEALER 13D
S: STANDARD-HILL ACE 96F
SHPH 7S GLITTER 24Y

CHSF 52U BRIAN 5Y
CHSF 7W ROSE 22A
SQUARE-D PAT 2N 7S
MHFM MISS NED 806H 627S

GRANDVIEW CMR MR DOM 86P Y332
D: WCC MISS MISSISSIPPI 619D
BAR-J-M TANYA 19T

CMR ILR DOMINO 86P
GRANDVIEW CMR LADY ONLINE 9013ET
BAR-J-M ROCKEY 120L
MOOREHAVEN DELIA NELL 122L 15N

Weights	Birth	Weaning	Yearling	
	Jan 21/21	Aug 30	Jan 2	adjusted
	85(twin)	690	1010	1059

Very cool calf here. He is the complete package calving ease bull in a moderate frame. All of our Ace calves are squarely built with lots of hair and bone. 100J excels in thickness throughout and depth of muscle, rib, and heart. He is short marked with almost full eye pigment and well ahead of average testicle development. His dam is a dark red, speckle faced cow with a great udder and capacity. 100J was Senior Champion Bull Calf at the NW SK Hereford Field Day. Terms announced sale day.

LOT 31

CE -1.9 BW 3.3 WW 48.3 YW 75.1 SC 0.7 MCE -3.4 MILK 14.2



DAM

STANDARD-HILL GAMBIT 178J**SHL 178J C03082967 Yearling Bull**

CHSF 5Y DEALER 13D
S: STANDARD-HILL ACE 96F
SHPH 7S GLITTER 24Y

CHSF 52U BRIAN 5Y
CHSF 7W ROSE 22A
SQUARE-D PAT 2N 7S
MHFM MISS NED 806H 627S

JNHR 511W MAX 151Z
D: STANDARD-HILL 151Z MIRAGE 138D
SHPH 66W MIRAGE 174Z

JNHR STOCKTOWN 511W
JNHR 8U ERIN 715X
SHPH 274S BARON 66W
SHPH 127S MIRAGE 43U

Weights	Birth	Weaning	Yearling	
	Jan 25/21	Aug 30	Jan 2	adjusted
	100	740	1095	1160

Big truck with a lift kit. Gambit 178J is a performance bull with extra frame. Once again a Ace calf with lots of thickness, bone, hair, and eye appeal. 178J was the leader of the pack for both actual and adjusted weaning and yearling weights. His dam is an 1800 lb power house that you'll admire for her muscle, capacity, and easy fleshing ability.

LOT 32

CE 11.8 BW -0.9 WW 38.1 YW 63.1 SC 1.0 MCE 8.2 MILK 18.1

STANDARD-HILL VENTURE 104J**SHL 104J C03082975 Yearling Bull**CHSF 5Y DEALER 13D
S: STANDARD-HILL ACE 96F
SHPH 7S GLITTER 24YCHSF 52U BRIAN 5Y
CHSF 7W ROSE 22A
SQUARE-D PAT 2N 7S
MHFM MISS NED 806H 627S

MCCOY 8Y MAVERICK 25E

NW 73S W18 HOMEGROWN 8Y ET

D: STANDARD-HILL CLARA 6G

MCCOY 70Y CONNIE 87A

STANDARD-HILL CLARA 11C

BARE MR YOU TUBE 4Y
STANDARD-HILL 66W ANNABELE 70A

Weights	Birth	Weaning		Yearling	
	Jan 25/21	Aug 30	adjusted	Jan 2	adjusted
	75	600	648	875	926

**DAM**

Sleep easy heifer bull off a beautiful first calver. 104J has the smallest actual birth weight of this yearling group with EPDs for CE and BW in the top 5% of the breed. Fits the mould of the Ace calves; made like a brick, level, attractive, and hairy. 104J is moderate framed and deep bodied. His dam was Grand Champion Female at the 2021 NW SK Field Day.

LOT 33

CE 14.5 BW -2.5 WW 30.8 YW 50.0 SC 0.6 MCE 9.6 MILK 10.8

STANDARD-HILL GAMBLER 175J**SHL 175J C03082962 Yearling Bull**CHSF 5Y DEALER 13D
S: STANDARD-HILL ACE 96F
SHPH 7S GLITTER 24YCHSF 52U BRIAN 5Y
CHSF 7W ROSE 22A
SQUARE-D PAT 2N 7S
MHFM MISS NED 806H 627S

BARE MR YOU TUBE 4Y

NCX WINCHESTER 745W

D: STANDARD-HILL MIRAGE 274B

NCX MISS WHIPLASH 3W

SHPH 127S MIRAGE 43U

SHPH 10M FREE STYLE 127S
TCK MISS NATIONAL APRIL 88P

Weights	Birth	Weaning		Yearling	
	Feb 08/21	Aug 30	adjusted	Jan 2	adjusted
	80	600	594	870	950

**DAM**

Goggle eyed heifer bull with a moderate frame. Gambler fits very well with his paternal brother, Lot 32. The record aint broken...another Ace that is built square as a brick, attractive, and smooth. 175J's Bare Mr You Tube 4Y dam is easy fleshing, moderate, and beautifully uddered. Gambler is very close to top 1% for CE and top 5% for BW EPDs in the breed.

LOT 34

CE 10.7 BW -1.2 WW 36.9 YW 59.6 SC 0.7 MCE 4.3 MILK 22.5

STANDARD-HILL DJD MAGNETO 112J**SHL 112J C03082972 Yearling Bull**MCCOY 70Y SKYFALL 53A
S: MCCOY 53A MAGNET 109E
MCCOY P20 ZENA 1BJDH 117R EQUITY 70Y ET
MCCOY 25M ALISON 64W
SHF PROGRESS P20
MCCOY 23U ZENA 142Z

TCF 305A STACKED 609D

TCF JVJ 11X THE GOODS 305A

D: STANDARD-HILL DJD VIRGINIA 1F

GHC MISS DEW 185U

STANDARD-HILL VIRGINIA 3C

SHPH 7S DOMINATOR 70Y
SHPH 41R APHRODITE 1W

Weights	Birth	Weaning		Yearling	
	Jan 27/21	Aug 30	adjusted	Jan 2	adjusted
	80	615	624	885	939

**FULL SIB**

Red necked, goggle eyed, short marked heifer bull. If you want pigment we can't get too much more than this. 112J ranks top 5% for CE and BW EPDs in the breed. He has decent thickness in top, rear quarter, and heart, and a ton of hair. Owned with Danny and June Dodsworth. Full sibling sold to Spring Mountain Stock Farm at Beaverlodge, AB last year.

LOT 35



CE 6.2 BW 0.9 WW 41.3 YW 71.7 SC 0.9 MCE 5.7 MILK 23.2



DAM

STANDARD-HILL FORCE 120J

SHL 120J C03082965 Yearling Bull

MCCOY 70Y SKYFALL 53A
S: MCCOY 53A MAGNET 109E
MCCOY P20 ZENA 1B

BARE MR YOU TUBE 4Y
D: STANDARD-HILL 4Y KARISTA 28D
SQUARE-D GINA 193S

JDH 117R EQUITY 70Y ET
MCCOY 25M ALISON 64W
SHF PROGRESS P20
MCCOY 23U ZENA 142Z
NCX WINCHESTER 745W
NCX MISS WHIPLASH 3W
SQUARE-D CONQUER ET 44N
REMITALL EVENTRESS 193L

Weights	Birth	Weaning		Yearling	
	Jan 28/21	Aug 30	adjusted	Jan 2	adjusted
	95	715	698	1040	1108

Dark red, red necked performance bull. Force 120J was second in the group at weaning and yearling weight times. He is long spined, square hipped with decent width of top and rump. He carries his muscle down into his stifle. His dam has been a solid producer thus far as we have come to always expect from her cow line.

LOT 36



CE 5.6 BW 1.2 WW 44.2 YW 71.5 SC 1.0 MCE 1.5 MILK 20.3



DAM

STANDARD-HILL VELOCITY 126J

SHL 126J C03082966 Yearling Bull

MCCOY 70Y SKYFALL 53A
S: MCCOY 53A MAGNET 109E
MCCOY P20 ZENA 1B

SHPH 62T CANNON 173A
D: STANDARD-HILL 173A GLITTER 38D
SHPH 7S GLITTER 24W

JDH 117R EQUITY 70Y ET
MCCOY 25M ALISON 64W
SHF PROGRESS P20
MCCOY 23U ZENA 142Z
SHPH 63N CANNON 62T
SHPH 5L TANGELO 31U
SQUARE-D PAT 2N 7S
MHFM MISS NED 806H 627S

Weights	Birth	Weaning		Yearling	
	Jan 29/21	Aug 30	adjusted	Jan 2	adjusted
	93	710	693	970	1026

Another dark red Magnet 109E calf with lots of maternal quality. Velocity 126J is abundantly pigmented, smoothly made, with good skeletal extension and depth of rib. He has decent muscling and width of structure and a lot of hair. His dam is an 1800 lb cow that carries it well, and she is off a full sister of the dam of our Ace herdsire.

LOT 37



CE 1.0 BW 3.3 WW 49.0 YW 85.4 SC 1.1 MCE -0.6 MILK 20.5



DAM

STANDARD-HILL MEGATRON 140J

SHL 140J C03082974 Yearling Bull

MCCOY 70Y SKYFALL 53A
S: MCCOY 53A MAGNET 109E
MCCOY P20 ZENA 1B

GHC QUIGLEY 20B
D: STANDARD-HILL MAGIE 46F
STANDARD-HILL 62T MAGIE 181A

JDH 117R EQUITY 70Y ET
MCCOY 25M ALISON 64W
SHF PROGRESS P20
MCCOY 23U ZENA 142Z
SHF MOORE R117 240
GHC MISS KAREN 141U
SHPH 63N CANNON 62T
SHPH 98R PARIS 127U

Weights	Birth	Weaning		Yearling	
	Jan 25/21	Aug 30	adjusted	Jan 2	adjusted
	96	625	630	905	957

Very quiet bull with good width, depth and length of body. Megatron 140J was on Jayce's 3 year old 4-H cow this past summer and they were champion pair at the Regional 4-H Lloyd Expo Show. The cow did a nice job on her second calf despite being drug around the country. Our Magie line has been synonymous with growth.



The Herald of Herefords

what you can gain from cross breeding

*Hardiness & Efficiency

In a world where everything is expensive the Hereford does it all on less and looks good doing it.

*Fertility

Hereford cows rebreed quick keeping calving season tight whether you're working with purebreds or influence

*Longevity

With their demeanor, structural soundness, and efficiency the Hereford animal last longer, providing positive ROI

*Docility

Tired of those cattle that you can't turn your back on or the ones that demolish your facilities on a regular basis, or scare your family into sitting out chore time? Herefords can improve on these problems!

The modern Hereford is a product of extreme market pressure and stringent selection. Its time to "Better Your Beef"

Standard Hill Hereford Shows 2021

The NW SK Hereford Club Field Day fired up again in August. We were fortunate to win the Senior Division of the Bull Calf Jackpot Show (with Hotshot 100J), Junior & Grand Champion Cow/Calf Pair (with Clara 6G/Venture 104J).



Hotshot 100J-Lot 30



Clara 6G-Dam Lot 32



Venture 104J-Lot 32

The Lloydminster Stockade Round-Up continued its long tradition this fall with another large show. We took six head to town and it was great to be out among people.



HARVARD 9H
Champion
Yearling Bull



IRIS 116H
Reserve Champion
Yearling Heifer

GAMBIT 178J
LOT 31
Reserve Champion
Senior Bull Calf

LOGAN 152J
Reserve Champion
Senior Heifer Calf

Polled Hereford Two-Year Old Bulls

LOT **38**



CE 0.5 BW 4.1 WW 52.5 YW 85.7 SC 1.4 MCE -0.3 MILK 20.4



20B

STANDARD-HILL VECTOR 113H

SHL 113H C03071167 Two year-old Bull

MCCOY 70Y SKYFALL 53A
S: MCCOY 53A MAGNET 109E
MCCOY P20 ZENA 1B

GHC QUIGLEY 20B
D: STANDARD-HILL VIRGINIA 4F
STANDARD-HILL 136Y VIRGINIA 5A

JDH 117R EQUITY 70Y ET
MCCOY 25M ALISON 64W
SHF PROGRESS P20
MCCOY 23U ZENA 142Z

SHF MOORE R117 Z40
GHC MISS KAREN 141U
SHPH 75 DIEHARD 136Y
SHPH 274S COLORADO 1X

Weights	Birth	Weaning	Yearling
Dec 23/21	Apr 12/20	Oct 14/20	Mar 15
1410	89	570	895
		adjusted 668	adjusted 1021

Dark red, goggle eyed bull with potential for use on heifers. Vector 113H was a moderate 89 lb at birth off a first calf heifer. He has balance and a smooth shoulder that also lend to calving ease. A fairly complete bull with some upside for growth in his pedigree. These two year olds are very consistent.

LOT **39**



CE 4.6 BW 2.9 WW 48.5 YW 79.6 SC 1.4 MCE 2.2 MILK 21.0

STANDARD-HILL VECTOR 135H

SHL 135H C03071168 Two year-old Bull

MCCOY 70Y SKYFALL 53A
S: MCCOY 53A MAGNET 109E
MCCOY P20 ZENA 1B

GHC QUIGLEY 20B
D: STANDARD-HILL KARISTA 40F
SHPH 7S KARISTA 28W

JDH 117R EQUITY 70Y ET
MCCOY 25M ALISON 64W
SHF PROGRESS P20
MCCOY 23U ZENA 142Z

SHF MOORE R117 Z40
GHC MISS KAREN 141U
SQUARE-D PAT 2N 7S
SQUARE-D GINA 193S

Weights	Birth	Weaning	Yearling
Dec 23/21	May 02/20	Oct 14/20	Mar 15
1460	85	560	885
		adjusted 648	adjusted 994

3/4 sibling to Lot 38. Once again goggle eyed, 135H is also red necked and very short marked. His numbers and phenotype profile him towards calving ease and an option for heifers. He was off a first calver himself with a birthweight of 85 lb, he has an average EPD for BW and is above average for CE. His frame is long, he's not overpoweringly thick, and he is smooth in shoulder and his transitions.

LOT **40**



CE 10.4 BW -0.6 WW 36.3 YW 61.3 SC 0.6 MCE 5.4 MILK 20.4

STANDARD-HILL VECTOR 144H

SHL 144H C03071169 Two year-old Bull

MCCOY 70Y SKYFALL 53A
S: MCCOY 53A MAGNET 109E
MCCOY P20 ZENA 1B

TCF 305A STACKED 609D
D: STANDARD-HILL MIRAGE 75F
STANDARD-HILL MIRAGE 274B

JDH 117R EQUITY 70Y ET
MCCOY 25M ALISON 64W
SHF PROGRESS P20
MCCOY 23U ZENA 142Z

TCF JVJ 11X THE GOODS 305A
GHC MISS DEW 185U
BARE MR YOU TUBE 4Y
SHPH 127S MIRAGE 43U

Weights	Birth	Weaning	Yearling
Dec 23/21	May 08/20	Oct 14/20	Mar 15
1435	77	525	830
		adjusted 606	adjusted 936

Surefire heifer bull with lots of dark pigment. Vector 144H is designed for work on heifers. He was 77 lb at birth off a first calver, ranks top 5% in the breed for Calving Ease and Birth Weight EPDs, is smooth made, and clean fronted. His dam is a moderate cow with a great udder who's dam is also that of Lot 33.



274B

LOT 41



CE 7.7 BW 1.0 WW 43.2 YW 79.1 SC 0.7 MCE 1.0 MILK 21.1

STANDARD-HILL VECTOR 142H

SHL 142H C03076466 Two year-old Bull

MCCOY 70Y SKYFALL 53A
S: MCCOY 53A MAGNET 109E
MCCOY P20 ZENA 1B

JDH 117R EQUITY 70Y ET
MCCOY 25M ALISON 64W
SHF PROGRESS P20
MCCOY 23U ZENA 142Z

STANDARD-HILL INNOVATOR 1C FCC 2U HARLAN 7Y
D: STANDARD-HILL CLARA 66F STANDARD-HILL 75 VIRGINIA 1A
SHPH 28U ANNABELLE 70Z SHPH 2N BEEFMAN 28U
SHPH 50T RENA 74W

Weights	Birth	Weaning	Yearling
Dec 23/21	Feb 10/20	Oct 14/20	Mar 15
1560	74	590	985
		adjusted 591	adjusted 972



Calving ease bull with dark pigment off one of our oldest cow lines. With an actual birth weight of 74 lb and EPDs for CE and BW in the top 15% for the breed, Vector 142H will work in the heifer pen. His dam is from our Clara cow family that has been working here since the 1970s.

1C

LOT 42



CE 14.9 BW -0.3 WW 36.4 YW 60.1 SC 0.7 MCE 8.5 MILK 22.7

STANDARD-HILL MAVERICK 173H

SHL 173H C03071123 Two year-old Bull

NJW 73S W18 HOMEGROWN 8Y ET
S: MCCOY 8Y MAVERICK 25E
MCCOY 70Y CONNIE 87A

SHF WONDER M326 W18 ET
NJW P606 72N DAYDREAM 73S
JDH 117R EQUITY 70Y ET
MCCOY 30N CONNIE 3W

SHPH 9J TUNDER 8M
D: SHPH 8M PROMO 79W
SHPH 22E PAULINE 27K

SHPH 22E ASTRO 9J
REMITALL TAMI 243J
SHPH 84C ROBIN 22E
SQUARE-D PAULA 94IG

Weights	Birth	Weaning	Yearling
Dec 23/21	Apr 15/20	Oct 14/20	Mar 15
1495	78	600	870
		adjusted 664	adjusted 968



When I say these two-year olds are consistent I mean they were all moderate at birth and fairly even in growth through out their life. 173H is a surefire heifer bull with a red neck and moderate frame. He is top 1% for Calving Ease and top 5% for Birth Weight EPDs. His dam is from a line that has been proven to have longevity. Dam has had 10, grand dam 12 calves.

27K

LOT 43



CE 11.2 BW 0.6 WW 38.7 YW 64.4 SC 1.0 MCE 3.6 MILK 21.2

STANDARD-HILL MAVERICK 184H

SHL 184H C03071130 Two year-old Bull

NJW 73S W18 HOMEGROWN 8Y ET
S: MCCOY 8Y MAVERICK 25E
MCCOY 70Y CONNIE 87A

SHF WONDER M326 W18 ET
NJW P606 72N DAYDREAM 73S
JDH 117R EQUITY 70Y ET
MCCOY 30N CONNIE 3W

SQUARE-D PAT 2N 7S
D: SHPH 7S MAGIE 168Y
SHPH 8M MARIGOLD 2U

WILCOR 55K NORTHEASTERN OL 2N
PLAIN LAKE 12E 1K PATRICIA 7P
SHPH 9J TUNDER 8M
POOR-BOY MAGIE'S NOTES 655L

Weights	Birth	Weaning	Yearling
Dec 23/21	Apr 15/20	Oct 14/20	Mar 15
1440	85	605	885
		adjusted 648	adjusted 964



Another calving ease bull with more width of muscle and skeleton. Maverick 184H has a respectable 85 lb actual birth-weight and EPDs that put him in the top 5% for Calving Ease and top 10% for Birth weight, making him an option for heifers. He is still clean fronted but possesses a squarer hip and top and more rib than his pen mates. He is scurred.

DAM

LOT 44



CE 9.4 BW 1.6 WW 40.7 YW 73.2 SC 1.2 MCE 2.7 MILK 22.4

STANDARD-HILL TORNADO 115H**SHL 115H C03071130 Two year-old Bull**

NJW 73S W18 HOMEGROWN 8Y ET SHF WONDER M326 W18 ET
 S: MCCOY 8Y MAVERICK 25E NJW P606 72N DAYDREAM 73S
 MCCOY 70Y CONNIE 87A JDH 117R EQUITY 70Y ET
 MCCOY 30N CONNIE 3W

STANDARD-HILL INNOVATOR 1C FCC 2U HARLAN 7Y
 D: STANDARD-HILL 1C IRIS 16E STANDARD-HILL 7S VIRGINIA 1A
 STANDARD-HILL 7Y IRIS 22C FCC 2U HARLAN 7Y
 SHPH 62T IRIS 16W

Weights	Birth	Weaning	Yearling
Dec 23/21	May 08/20	Oct 14/20	Mar 15
1415	77	520	830
		adjusted 631	adjusted 990



22C

Very attractive made heifer bull. Tornado 115H is Jayce's bull from his famous Iris cow family that has done so well for him. He is a nice dark red but lacks eye pigment...nature doesn't let us choose. He is extremely level in his lines, smooth made, and nice fronted. His actual BW of 77 and his EPDs profile him as a great option for heifers.

LOT 45



CE 10.5 BW 0.5 WW 41.3 YW 62.5 SC 0.7 MCE 8.7 MILK 18.1

STANDARD-HILL CYBER 196H**SHL 196H C03071127 Two year-old Bull**

BARE MR YOU TUBE 4Y NCX WINCHESTER 745W
 S: STANDARD-HILL MATRIX 49E NCX MISS WHIPLASH 3W
 SHPH 40X CHELAN 46Z GHC-CT-GUARDIAN 40X
 SHPH 15U CHELAN 33X
 SQUARE-D PAT 2N 7S WILGOR 55K NORTHEASTERN OL 2N
 D: SHPH 7S GLITTER 24Y PLAIN LAKE 12E 1K PATRICIA 7P
 MHFM MISS NED 806H 627S MHFM MR VICTOR 15D 806H
 MHFM MISS NED 13F 334N

Weights	Birth	Weaning	Yearling
Dec 23/21	Apr 19/20	Oct 14/20	Mar 15
1470	82	650	890
		adjusted 705	adjusted 980



DAM

Sweet fronted, square hipped calving ease bull off one of our favourite Hereford cows ever on the place. It's not often you see a bull with such a level and clean profile that can impress when you look behind and over his top, but he does. He will work on heifers or cows, and promises to produce some quality females same as both his grandsires did for us.

LOT 46



CE 3.5 BW 3.2 WW 47.8 YW 80.6 SC 0.8 MCE 5.6 MILK 23.6

STANDARD-HILL VORTEX 122H**SHL 122H C03071122 Two year-old Bull**

BARE MR YOU TUBE 4Y NCX WINCHESTER 745W
 S: STANDARD-HILL MATRIX 49E NCX MISS WHIPLASH 3W
 SHPH 40X CHELAN 46Z GHC-CT-GUARDIAN 40X
 SHPH 15U CHELAN 33X
 SHPH 63N CANNON 62T SHPH 68L ARISTOCRAT 63N
 D: SHPH 62T IRIS 16W SHPH 236G FAIRY 8L
 SHPH 10M HELENA 26R SHPH 28J LAREDO 10M
 SQUARE-D CHELAN 979G

Weights	Birth	Weaning	Yearling
Dec 23/21	May 11/20	Oct 14/20	Mar 15
1365	95	555	790
		adjusted 674	adjusted 951



DAM

Vortex is the only two year old we have on offer that doesn't fit the bill of a heifer bull. His dam was Jayce's first cow and she has done a whale of a job for our young cowman. 122H will be the final direct progeny to sell off 16W. He is squarely built, hairy, and has lots of bone and testicle. You'll admire his depth of quarter and rib. He is scurred.

On behalf of the Schachtel family and Eye Hill Stock farm welcome to the Standard Hill Connection Sale. We are very excited to once again work with the Myer and Gerlinksy families. Time flies as this is our 5th year being part of this great sale. I can't thank all our past and future customers enough for the support and taking time to look at our offering. This time of the year the catalogues flock to the mailboxes in droves and there are lots of options; I appreciate that we are one of them.



Brennan & Taryn Schachtel, Marshall, SK
306-821-2504

I don't need to remind anyone of the challenges of 2021; but I believe amongst challenges there are many opportunities ahead. I commend all of producers for the adaptability in coming up with new, as well as some old out of the box thinking to graze and winter cattle. I firmly believe some of the best years are ahead in the cattle industry and they're not far away.

I am extremely proud of the bulls we have on offer this year. Its cliché to say this is the best set yet; but I truly believe it is! Going back to AI changed the dynamics and has allowed us to bring back some old genetics as well as add some exciting new ones as well. There are many new genetics for repeat customers and some exciting outcross genetics you just don't find every day. There is a strong set of heifer bull options, as well as a set of bulls that I believe will add pounds to your calf crop and leave you a great set of replacement females. It's years like these remind us how hardy, adaptable, and dependable these angus cattle can be. Easy fleshing, highly fertile, good structured cows are a must around here and if they don't fit the theme, they hit the road.

The bulls were weaned on Aug. 28th this year with no creep feed during their development. They were developed on a moderate growing ration to promote longevity. Pictures and videos were taken Jan. 11/22; bulls change rapidly at this age so if you need updated videos please contact us. Better yet you are welcome to tour the bulls anytime leading up to sale day; we would love to show you their mothers and their sisters. We are only 15 mins east of Lloydminster. Please feel free to call with any questions.

Thanks for your interest,

Brennan Schachtel



Taryn, Lyndi, Brennan, Resch



Theresa and Pius, Macklin, SK





REF Boss



CE 0.0 BW 2.5 WW 46 YW 70 SC 0.16 MCE 4.0 MILK 19

RED FLYING K BOSS 95C

Co-owned with Howe Red Angus. One of the great things about going back to AI is to bring Boss' back into our program. He was lost way too early in his career. The daughters we have in production are dark red tanks with great udders and are certainly very easy doing cattle. The sons on offer exhibit his same great type as him as he really stamped his offspring. Multiple seedstock breeders have used Boss with great success.

FKR 95C

RED ML MAX 862U
S: RED FLYING K MAX 153Y D: RED THAT'LL DO DIADEM 7D
RED FLYING K LASSIE 37S RED FLYING K MS DIADEM 100X
RED MCRAE'S KERI 9J

Sire of Lots: 48, 51 Grandsire of Lot: 58



LOT 51
SON



19F
SON

REF Regal



CE 2.0 BW 2.7 WW 63 YW 97 SC 1.30 MCE 7.0 MILK 10

RED FRASER REGAL 909G

We were fortunate to purchase a semen interest in Regal in the spring of 2020. After owning his full sister (dam of lot 53) it was a very easy decision. His dam is a no miss cow at Fraser's who annually brings one of the top ones out of their great program. He is doing a tremendous job of siring calving ease, growth with early maturity in his sons. This calving season he was used heavily and is about as adaptable as they come with the ability to breed to both heifers and cows with zero issues. I believe he is a breeding piece who's chapter is just beginning.

JFRA 909G

VISION UNANIMOUS 1418
S: FRASER POKER FACE 613D RED BRYLOR RED KODIAK 3A
RED HOWE DYNA QUEEN 241A D: RED FRASER MISS 601D
RED FRASER MISS 481B

Sire of Lots: 49, 52, 54, 60



FULL SISTER (dam of lot 53)

REF Replay



CE 15.0 BW -4.3 WW 34 YW 53 SC 0.59 MCE 12.0 MILK 26

RED VALLEYHILLS REPLAY 70E

Co-owned with Valleyhills Angus. Interesting outcross genetics on this herdbull. Backed by a sire that worked for many years at Valleyhills and an ideal angus cow. He is as a bomb proof calving herdsire that you will find with the ability to bring down birth on the most powerful cows and calve heifers with ease. Dark red, full of vigour; with added growth you don't find every day. His daughters are moderate easy doing type females that we are looking forward to watching develop.

LAX 70E

HOOVER DAM
S: VALLEYHILLS HOOVER DAM 27Z D: PRAIRIELANE IDEAL 0051-2029
RED VALLEYHILLS LARKABELLE 46J PRAIRIELANE 2029 ROSEBUD 7048
PRAIRIELANE 9012 ROSEBUD 1146

Sire of Lots: 50, 57, 61



LOT 50: REPLAY 70E SON

REF Roosevelt



CE 13.0 BW -2.0 WW 26 YW 44 SC 0.30 MCE 14.0 MILK 26

RED FLYING K ROOSEVELT 46C

Co-owned with Valley Hills Angus. Purchased in 2016 from Flying K Red Angus. 46C has really become an important piece of the puzzle within our breeding program. He sure stamps them in terms of overall shape, correctness, structure, smoothness and their hair coats. His calves are born extremely easy but really grow afterwards. Roosevelt is moderate, smooth made, nicely patterned with great dark feet on him. The daughters we have retained are beautiful uddered with lots of milk.

FKR 46C

RED BIEBER ROUGH RIDER 10712
S: RED BIEBER ROOSEVELT W384
RED BIEBER SHEBA 9602

RED BECKTON NEBULA U865
D: RED FLYING K LANA 185Z
RED FLYING K LASSIE 1145

Sire of Lot: 55



52H, highseller from 2021 sale,
SON OF ROOSEVELT 46C

REF Red U-2 Momma's Boy 167X



DUA 167X

RED SVR AMBUSH 59P
S: RED FLYING K AMBUSH 6T
RED FLYING K MANDY 120N

RED U-2 BIG LEAGUE 544R
D: RED FLYING K LAKOTA 104U
RED FLYING K LAKOTA 68N

Sire of Lot: 47

CE -3.0 BW 2.4 WW 46 YW 71 SC 0.82 MCE 0.0 MILK 20

REF Red RREDS Seneca 731C



IMP 731C

RED BIEBER ROOSEVELT W384
S: RED BIEBER ROLLIN DEEP Y118
RED BIEBER TILLY 303S

RED BECKTON EPIC R397 K
D: RED RREDS ASTER 309A
RED MLK CRK ASTER 175

Sire of Lot: 56

CE 8.0 BW -0.2 WW 62 YW 98 SC 0.93 MCE 11.0 MILK 25

REF Red Brylor New Trend 22D



LMP 22D

V D A R NEW TREND 315
S: SSS BLACK TREND 13B
RED SSS MISS DYNAMO 3W

RED SEAMAN CHIEF 47Y
D: RED MEADOW CK MISS SEAMAN 31A
RED MEADOW CK PRINCESS 10W

Sire of Lot: 59

CE -8.0 BW 4.0 WW 34 YW 69 SC 0.96 MCE 3.0 MILK 37



Eye Hill Red Angus Yearling Bulls



CE 0.0 BW 2.1 WW 47 YW 79 SC -- MCE 0.0 MILK 24

RED EYE HILL MAMA'S BOY 23J

PBS 23J 2217432 Yearling Bull

RED FLYING K AMBUSH 6T
S: RED U-2 MOMMA'S BOY 167X
RED FLYING K LAKOTA 68N
RED RMJ REDMAN 1T
D: RED SPITTALBURN MISSEY 314A
RED SPITTALBURN MISSEY 824U

RED SVR AMBUSH 59P
RED FLYING K MANDY 120N
RED U-2 BIG LEAGUE 544R
RED FLYING K LAKOTA 68N
RED SL NORSEMAN KING 229I
CROWFOOT KURUBA 4033P
RED SIX MILE FULL HOUSE 572R
RED SPITTALBURN MS TOPPER 605S

Weights	Birth Jan 31/21	Weaning Aug 30	Yearling Jan 13
	90	770	1300



DAM

A real standout from an early age. We feel this bull is a herdbull and has a lot to offer. With an absolutely tremendous cow behind him that not only looks good everyday but has the production to show it. Her daughter raised the leadoff and high selling bull last year to Corn Ranches. Terms to be announced sale day.



CE 2.0 BW 1.1 WW 42 YW 66 SC -- MCE 2.0 MILK 23

RED EYE HILL BOSS 1J

PBS 1J 2217416 Yearling Bull

RED FLYING K MAX 153Y
S: RED FLYING K BOSS 95C
RED FLYING K MS DIADEM 100X
RED SIX MILE RUFF RIDE 686A
D: RED SPITTALBURN SADONA 733E
RED SPITTALBURN SADONA 106Y

RED ML MAX 862U
RED FLYING K LASSIE 37S
RED THAT'LL DO DIADEM 7D
RED MCRAE'S KERI 9J
RED SIX MILE RAWHIDE 222X
RED SUNBERRY INDEED 20Y
RED SIX MILE U GO HUGO 525U
RED SPITTALBURN SADONA 910W

Weights	Birth Jan 12/21	Weaning Aug 30	Yearling Jan 13
	80	745	1205



DAM

1J Reminds me so much of Boss, a real beef bull with lots of base width, muscle and depth of body. Will add pounds to his calf crop, cow is a nice wedgy cow with a beautiful udder.



CE 5.0 BW 0.8 WW 48 YW 78 SC -- MCE 7.0 MILK 14

RED EYE HILL REGAL 2J

PBS 2J 2217417 Yearling Bull

FRASER POKER FACE 613D
S: RED FRASER REGAL 909G
RED FRASER MISS 601D
RED GEIS KNIGHT HAWK 72'09
D: RED SPITTALBURN KIT 549C
RED SPITTALBURN KIT 49X

VISION UNANIMOUS 1418
RED HOWE DYNA QUEEN 241A
RED BRYLOR RED KODIAK 3A
RED FRASER MISS 481B
RED GEIS KNIGHT HAWK 223'06
RED GEIS BLOCKANA 139'06
RED SIX MILE NEW BLOOD 153N
RED SHODEREE KIT 206K

Weights	Birth Jan 15/21	Weaning Aug 30	Yearling Jan 13
	84	735	1095



DAM

I have really liked this calf from an early age. An early maturing bull that I feel could work on heifers and cows. The dam 549C gets the job annually bringing in one of the top calves. Maternal brother to a very good bull that went to Spittalburn Farms last year.

LOT **50**



CE 8.0 BW -1.1 WW 34 YW 59 SC -- MCE 9.0 MILK 22

RED EYE HILL REPLAY 13J

PBS 13J 2217425 Yearling Bull

VALLEYHILLS HOOVER DAM 27Z
S: RED VALLEYHILLS REPLAY 70E
PRAIRIELANE 2029 ROSEBUD 7048
RED LONE HILL SHINE 948D
D: RED EYE HILL SAMARIE 51G
RED EYE HILL SAMARIE 1420

HOOVER DAM
RED VALLEYHILLS LARKABELLE 46J
PRAIRIELANE IDEAL 0051-2029
PRAIRIELANE 9012 ROSEBUD 1146
RED XO CROWFOOT SHINE 296Z
RED LONE HILL EMILY 525Z
RED HOWE DESIGNER 88Z
RED GEIS SAMARIE 305'11

Weights	Birth	Weaning	Yearling
	Jan 26/21	Aug 30	Jan 13
	76	635	1080

Dark red, low birth weight with a lot of presence. Sure-fire heifer bulls with this kind of hip are very hard to find. His first-time dam did a tremendous job raising him, these 70E calves are born very small, have lots of vigour and really surprise you come weaning time.

LOT **51**



CE 10.0 BW -1.4 WW 29 YW 52 SC -- MCE 9.0 MILK 18

RED EYE HILL BOSS 11J

PBS 11J 2217424 Yearling Bull

RED FLYING K MAX 153Y
S: RED FLYING K BOSS 95C
RED FLYING K MS DIADEM 100X
RED RMJ REDMAN 1T
D: RED SPITTALBURN TOPPER 244Z
RED SPITTALBURN TOPPER 922W

RED ML MAX 862U
RED FLYING K LASSIE 37S
RED THAT'LL DO DIADEM 7D
RED MCRAE'S KERI 9J
RED SL NORSEMAN KING 2291
CROWFOOT KURUBA 4033P
RED SIX MILE FULL HOUSE 572R
RED SPITTALBURN MS TOPPER 605S

Weights	Birth	Weaning	Yearling
	Jan 25/21	Aug 30	Jan 13
	74	675	1065

This Boss son is so balanced, dark red with a great hair coat. He has been noticed easily by anyone touring the pen. This moderate framed bull is backed by a very efficient fault free Redman daughter that is also the grandam of the lot 55 bull. Heifer bull.



LOT **52**



CE -1.0 BW 3.2 WW 50 YW 82 SC -- MCE 6.0 MILK 11

RED EYE HILL REGAL 9J

PBS 9J 2217422 Yearling Bull

FRASER POKER FACE 613D
S: RED FRASER REGAL 909G
RED FRASER MISS 601D
RED PIE GAME ON 9109
D: RED SPITTALBURN MABEL 307A
RED SPITTALBURN MABEL 67X

VISION UNANIMOUS 1418
RED HOWE DYNA QUEEN 241A
RED BRYLOR RED KODIAK 3A
RED FRASER MISS 481B
RED VGW GAME PLAN 508
RED TPIE CASCADE 561
RED SIX MILE TROY 243T
RED SPITTALBURN MABEL 729T

Weights	Birth	Weaning	Yearling
	Jan 22/21	Aug 30	Jan 13
	92	740	1215

A very powerful Regal son that really puts the pieces together. He will add length of body and add pounds to his offspring. Out of the largest framed cow on the farm that has a very good production record with 3 daughters working in the herd.



LOT 53



CE 2.0 BW 2.6 WW 54 YW 85 SC -- MCE 2.0 MILK 24

RED EYE HILL NAVIGATION 59J

PBS 59J 2217464 Yearling Bull

RED VGW SPOT LITE 772
S: RED FLYING K NAVIGATOR 25C
RED FLYING K DUCHESS 25C

RED 3SC NAVIGATOR A448
RED VGW W054-HAZY 1390
RED JRA ESCALADE 76A
RED FLYING K TAMMY 103X
VISION UNANIMOUS 1418
RED HOWE DYNA QUEEN 231A
RED BRYLOR RED KODIAK 3A
RED FRASER MISS 481B

FRASER POKER FACE 613D
D: RED FRASER MISS 802F
RED FRASER MISS 601D

Weights	Birth	Weaning	Yearling
	Feb 23/21	Aug 30	Jan 13
	84	645	1095



Very unique bull. He has presence about him and is full of angus character. His dam was high selling female at the Touch of Class sale, is a full sister to the Regal herd sire and was just recently flushed. The sire is a bull you will hear a lot more about very soon, he's off what I consider one of Flying K top cows. I think this is a herd bull that could be used many different directions whether it be heifers or cows. Co-owned with Devin Warriow.
Retaining 1/3 semen interest

LOT 54



CE 3.5 BW 0.8 WW 43 YW 68 SC -- MCE 7.5 MILK 14

RED EYE HILL REGAL 15J

PBS 15J 2217427 Yearling Bull

FRASER POKER FACE 613D
S: RED FRASER REGAL 909G
RED FRASER MISS 601D

VISION UNANIMOUS 1418
RED HOWE DYNA QUEEN 241A
RED BRYLOR RED KODIAK 3A
RED FRASER MISS 481B

RED GEIS KNIGHT HAWK 72'09
D: RED SPITTALBURN MISS 411B
RED SPITTALBURN FUNK MISS 104Y

RED GEIS KNIGHT HAWK 223'06
RED GEIS BLOCKANA 139'06
RED SIX MILE U GO HUGO 525U
RED COTEAU CREST PRICELESS 61W

Weights	Birth	Weaning	Yearling
	Jan 26/21	Aug 30	Jan 13
	80	760	1165



Another great dark red hided Regal son. A bull with a little extra frame that could run with heifers and then graduate to the cow herd. I think very highly of his dam, she has been a great cow for us. A full sib was born this calving season at 76 lb bw.

LOT 55



CE 10.0 BW -1.0 WW 23 YW 46 SC -- MCE 11.0 MILK 19

RED EYE HILL ROOSEVELT 19J

PBS 19J 2217429 Yearling Bull

RED BEIBER ROOSEVELT W384
S: RED FLYING K ROOSEVELT 46C
RED FLYING K LANA 185Z

RED BIEBER ROUGH RIDER 10712
RED BIEBER SHEBA 9602
RED BECKTON NEBULA U865
RED FLYING K LASSIE 1145

RED COCKBURN BREAKAWAY 411B
D: RED SPITTALBURN TOPPER 678D
RED SPITTALBURN TOPPER 244Z

RED SSS BREAK OUT 114Y
RED COCKBURN MS HAUCK 459W
RED RMJ REDMAN 1T
RED SPITTALBURN TOPPER 922W

Weights	Birth	Weaning	Yearling
	Jan 29/21	Aug 30	Jan 13
	82	620	1030

Another great 46C heifer bull. They have been a main stay for years and have a pattern about them and 19J follows the same mold. 46C is still going strong at 7 years age being structurally sound and is built for years to come.

LOT **56**



CE 5.0 BW 0.8 WW 23 YW 49 SC -- MCE 10.0 MILK 22

RED EYE HILL SENECA 21J

PBS 21J 2243169 Yearling Bull

RED BIEBER ROLLIN DEEP Y118
S: RED RREDS SENECA 731C
RED RREDS ASTER 309A
RED GEIS KNIGHT HAWK 27'05
D: RED GEIS MISS POTEET 68'10
RED RIVERDALE MISS POTEET 368L

RED BIEBER ROOSEVELT W384
RED BIEBER TILLY 399W
RED BECKTON EPIC R397 K
RED MLK CRK ASTER 175
RED GEIS KNIGHT HAWK 14'02
RED JD LANA BLOCKANA SM
RED SSS Bomber 789G
RED RIVERDALE COUNTESS 30F

	Birth	Weaning	Yearling
Weights	Jan 30/21	Aug 30	Jan 13
	84	715	1145

An absolute tank; wide based and chocked full of muscle. He sure is an interesting bull. The Seneca 731C has been hugely popular in the US and Canada siring moderate, easy doing "beef cattle" that are built for our conditions. Backed by the one of our most productive cows: 68X whom has multiple daughters in the herd, 3 progeny in breeders programs and is matriarch of lot 56-58.



DAM

LOT **57**



CE 13.0 BW -2.9 WW 30 YW 49 SC -- MCE 12.0 MILK 24

RED EYE HILL REPLAY 26J

PBS 26J 2217434 Yearling Bull

VALLEYHILLS HOOVER DAM 27Z
S: RED VALLEYHILLS REPLAY 70E
PRAIRIELANE 2029 ROSEBUD 7048

HOOVER DAM
RED VALLEYHILLS LARKABELLE 46J
PRAIRIELANE IDEAL 0051-2029
PRAIRIELANE 9012 ROSEBUD 1146
RED FLYING K ROOSEVELT 46C
RED BIEBER ROOSEVELT W384
RED FLYING K LANA 185Z
RED FLYING K BOSS 95C
D: RED EYE HILL MS POTEET 10G
RED EYE HILL MISS POTEET 16E
RED GEIS MISS POTEET 68'10

	Birth	Weaning	Yearling
Weights	Jan 31/21	Aug 30	Jan 13
	68	600	980

Sleep easy heifer bull. Dark red, long with a great haircoat. These 70E calves have impressed us how well they have done from birth to weaning. More importantly the calf vigor of them is something that is priceless.

LOT **58**



CE 11.0 BW -1.6 WW 26 YW 42 SC -- MCE 12.0 MILK 22

RED EYE HILL ROOSEVELT 29J

PBS 29J 2217436 Yearling Bull

RED BIEBER ROOSEVELT W384
S: RED FLYING K ROOSEVELT 46C
RED FLYING K LANA 185Z
RED FLYING K BOSS 95C
D: RED EYE HILL MS POTEET 16E
RED GEIS MISS POTEET 68'10

RED BIEBER ROUGH RIDER 1071Z
RED BIEBER SHEBA 9602
RED BECKTON NEBULA U865
RED FLYING K LASSIE 1145
RED FLYING K MAX 153Y
RED FLYING K MS DIADDEM 100X
RED GEIS KNIGHT HAWK 27'05
RED RIVERDALE MISS POTEET 368L

	Birth	Weaning	Yearling
Weights	Feb 3/21	Aug 30	Jan 13
	74	625	1025

Another sleep easy heifer bull, dark red, long spined with a great haircoat. A lot of people have been quick to spot this bull as one of their choices in the heifer bull section. 16E is a beautifully made Boss daughter out of the great 68X cow.

LOT **59**



CE -6.0 BW 3.6 WW 29 YW 57 SC -- MCE 0.0 MILK 27



DAM

RED EYE HILL NEW TREND 24J

PBS 24J 2217433 Yearling Bull

SSS BLACK TREND 13B
S: RED BRYLOR NEW TREND 22D
RED MEADOW CK MISS SEAMAN 31A
RED PIE GAME ON 9109
D: RED SPITTALBURN SUE 505C
RED SPITTALBURN SUE 149Y

VDAR NEW TREND 315
RED SSS MISS DYNAMO 3W
RED SEAMAN CHIEF 47Y
RED MEADOW CK PRINCESS 10W
RED VOW GAME PLAN 508
RED TPIE CASCADE 561
RED SIX MILE CHEROKEE 350T
RED RSL SUE 750J

Weights	Birth	Weaning	Yearling
	Jan 1/21	Aug 30	Jan 13
	92	670	1060

Old school genetics being out of the one of the greatest maternal bulls in the Red Angus breed in New Trend 22D. Out of an absolute tank of a cow that is very easy fleshing. You will want to retain as many daughters as you can out of this combo.

LOT **60**



CE 3.0 BW 2.6 WW 43 YW 68 SC -- MCE 6.0 MILK 17



DAM

RED EYE HILL REGAL 34J

PBS 34J 2217438 Yearling Bull

FRASER POKER FACE 613D
S: RED FRASER REGAL 909G
RED FRASER MISS 601D
RED SSS N. KING 652T
D: RED EYE HILL ELLIE 1425
GET-A-LONG ELLIE 178

VISION UNANIMOUS 1418
RED HOWE DYNA QUEEN 241A
RED BRYLOR RED KODIAK 3A
RED FRASER MISS 481B
RED SL NORSEMAN KING 2291
CROWFOOT BLACKBIRD 3023N
RED BAKERS CENTURY
GET-A-LONG ELBA 834

Weights	Birth	Weaning	Yearling
	Feb 5/21	Aug 30	Jan 13
	88	665	1030

Very nice made Regal son with a great haircoat. With his construction I would safely consider him a heifer bull option on British influenced females. Out of a tremendous King daughter that sired a feature bull last year to Forbes at Senlac.

LOT **61**



CE 4.0 BW 0.3 WW 38 YW 65 SC -- MCE 4.0 MILK 26

RED EYE HILL REPLAY 51J

PBS 51J 2217454 Yearling Bull

VALLEYHILLS HOOVER DAM 27Z
S: RED VALLEYHILLS REPLAY 70E
PRAIRIELANE 2029 ROSEBUD 7048
RED WILBAR DOUBLE TAKE 701C
D: RED B-ELLE ARROW EXPRESS 753E
RED B-ELLE YOSHEE ARROW 373A

HOOVER DAM
RED VALLEYHILLS LARKABELLE 46J
PRAIRIELANE IDEAL 0051-2029
PRAIRIELANE 9012 ROSEBUD 1146
RED BAR-E-L DOUBLE DEUCE 198Y
RED WILBAR BRNDINA 638S
RED BAR-E-L SCOUTMASTER 101Y
RED B-ELLE USHAS YOSHEE 137Y

Weights	Birth	Weaning	Yearling
	Feb 17/21	Aug 30	Jan 13
	92	640	1060

Dark red moderate made chunk of a bull. 51J will add some hip and lower third to his offspring. Out of a powerhouse of a cow we purchased from Blooms a few years back.



THANK YOU TO LAST YEAR'S BUYERS

2021 STANDARD HILL CONNECTION

Pat & Karla Markevich
Stuart Crone
Holtby Farms
Corn Ranches
NLS-Jim Pulyk
Leon Pouliot
Glen Goodfellow
Ronald Gory
Ken & Michelle Blixrud
McKevitt Angus
RWR Farms
Darcy Dreidger
James Simmonds

Brian Duriez
Dayna Harrison
Lee Suteau
Hillis Farms
Sallywag Farms
Mike Andruik
Duane Bazylinski
Don Hamilton
Sampson's Thunderbird Ranch Ltd
Kyle Gervais
Spittalburn Farms
Tyson Morin
Jason Coleman

Lee Obrowsky
Forbes Brothers
Brost Farms Ltd
Darcy Mackay
Forever Young Cattle Co
Spring Mountain Stock Farm
Dexter Slugoski
Kruklylyk Livestock
PMD Polled Herefords
Tim Taphorn
Ganzer Ranch
Keith Erion
Harry Lake

HIGH SELLERS



509G

Sold to Leon Pouliot



15H

Sold to Sallywag Farms



52H

Sold to Corn Ranches



23G

Sold to Dexter Slugoski



333G

Sold to McKevitts Angus



70G

Sold to Brian Duriez



58H

Sold to Spittalburn Farms



175H

Sold to Forever Young CC



Open Commercial Heifers

LOT 62



10 BBF F1 HEIFERS

STANDARD HILL LIVESTOCK

born April 2021

LOT 63



7 SIMM X HEREFORD/RED ANGUS HEIFERS

TYSON MORIN - TRADEMARK RANCHING

born Feb-Mar 2021

LOT 64



7 RED ANGUS X HEIFERS

GANZER RANCHES

born April 2021

LOT 65



6 STRAIGHT BRED RED ANGUS HEIFERS

EYE HILL STOCK FARM

born Feb-Mar 2021

LOT 66



5 STRAIGHT BRED HEREFORD HEIFERS

STANDARD HILL LIVESTOCK

born April 2021

Terms and Conditions

Terms: All sales are in Canadian Funds, payable by cash or cheque on sale day, unless other arrangements have been made prior to the sale. Every animal sells to the highest bidder, and in cases of disputes the auctioneer will make the decision to reopen the bidding. The auctioneer's decision will be final. Each animal becomes the responsibility of the purchaser as soon as sold.

Announcements: Any announcements from the stand take precedence over print material.

Guarantee: All animals are backed by the respective breed associations Breeder Guarantee. All bulls will be semen tested before the sale, weather permitting. A list of semen evaluation results will be available at the sale or by calling the consignors the day before the sale. Bulls will be semen tested prior to the sale, however may sell deferred. Deferred bulls will be semen tested satisfactory prior to delivery. If a satisfactory semen test is not produced the purchaser will be refunded. The sellers have replacement bulls available. Hereford bulls sold to purebred breeders will be parentage and genetic defect tested by the seller prior to delivery. Angus bulls sold to purebred breeders will be parentage verified by the seller prior to delivery. Any other parentage or defect testing may be requested by the purchaser, however cost may be the responsibility of the purchaser. All genetic testing results will be shared with the purchaser.

Delivery: Free delivery within 500 km or to central locations in Saskatchewan and Alberta with consideration of volume and value of purchases.

Feeding/Wintering Program: Purchases can be sent back to their home pens and remain under consignor's management until May 15th free of charge. We strongly recommend you insure your purchases for liability reasons.

Insurance: The sellers encourage the purchasers to insure animals that remain at the seller's ranch due to liability. We can suggest an insurance agent to fulfill your needs, but there will not be an affiliated insurance provider at the sale.

Sight Unseen Purchases: Call the consignors to discuss what type of animal you require and your purchase price in mind. Sellers will do their best to fill your orders. Sellers encourage buyers to utilize the sales staff as well as picture and video to aid in selection.

All persons who attend the sale do so at their own risk.

Can't make it to the sale? Internet Bidding Available.

To view this sale visit www.dlms.ca, Fill out the registration form located under registration and sign-up for your free user account and select a username and password.

BIDDERS - To be approved as a bidder, Log in to dlms.ca and click BUYER APPROVAL tab, select the sale you are interested in bidding at and click sign up.

For more information

Call DLMS Reps:

Mark Shologan - 780-699-5082 or
DLMS Purebred Team 780.991-3025

DLMS
www.dlms.ca

Return Undeliverable to:

Standard Hill Livestock
PO Box 227
Maidstone, SK
S0M 1M0



2 pm MST NORTH OF MAIDSTONE, SK online at



The End



Lot 30



Lot 3



www.shlivestock.com